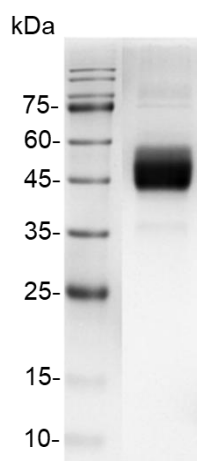


PRODUCT INFORMATION

Recombinant Human IL-15 Protein, CHO

v. 250901

Catalog number	C01211-20UG / C01211-100UG
Package	20 µg / 100 µg
Description	Interleukin-15 (IL-15) is a cytokine with structural similarity to Interleukin-2 (IL-2). Like IL-2, IL-15 binds to and signals through a complex composed of IL-2/IL-15 receptor beta chain (CD122) and the common gamma chain (gamma-C, CD132). IL-15 is secreted by mononuclear phagocytes (and some other cells) following infection by virus(es). This cytokine induces cell proliferation of natural killer cells; cells of the innate immune system whose principal role is to kill virally infected cells.
Species of Origin	Human
Expression System	CHO
Sequence	Asn49-Ser162
Affinity Tag	hFc (N-term) His-Avi tag (C-term)
Endotoxin Level	<0.1 EU per 1 µg of the protein by the LAL method.
Purity	>95% as determined by SDS-PAGE.
Form	Lyophilized
Storage Buffer	Lyophilized from a 0.2 µm filtered solution of PBS, pH 7.4.
Reconstitution	It is recommended to reconstitute the lyophilized protein in sterile H ₂ O to a concentration of 200 µg/mL and incubate the stock solution for at least 20 min to ensure sufficient re-dissolved.
Stability & Storage	This product is stable after storage at: <ul style="list-style-type: none"> ● -20°C for 12 months in lyophilized state from date of receipt. ● -20°C or -80°C for 1 month under sterile conditions after reconstitution. Avoid repeated freeze/thaw cycles.



Recombinant Human IL-15 Protein, CHO

For research use only.