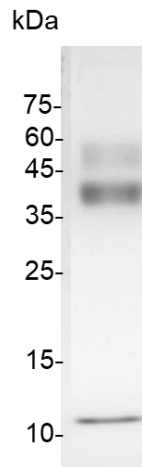


Recombinant Human TGF beta 1 Protein

v. 240101

Catalog number	C01198-5UG / C01198-20UG / C01198-100UG
Package	5 µg / 20 µg / 100 µg
Description	Transforming growth factor beta 1 or TGF-β1 is a polypeptide member of the transforming growth factor beta superfamily of cytokines. It is a secreted protein that performs many cellular functions, including the control of cell growth, cell proliferation, cell differentiation, and apoptosis. In humans, TGF-β1 is encoded by the TGFB1 gene.
Sequence	MPPSGLRLLPLLLPLLWLLVLTGPRPAAGLSTCKTIDMELVKRKRIEAIRGQILSK LRLASPPSQGEVPPGPLPEAVLALYNSTRDRVAGESAEPEPEPEADYYAKEVT RVLMEVETHNEIYDKFKQSTHSIYMFNTSELREAVPEPVLLSRAELRLLRLKLV EQHVELYQKYSNNSWRYLSNRLLAPSDSPEWLSFDVTGVVRQWLSRGGEIEG FRLSAHCSCDSRDNTLQVDINGFTTGRRGDLATIHGMNRPFLLLMATPLERAQ HLQSSRHRRALDTNYCFSSTEKNCCVRQLYIDFRKDLGWKWIHEPKGYHANFC LGPCPYIWSLDTQYSKVLALYNQHNPGASAAPCCVPQALEPLPIVYVGRKPK VEQLSNMIVRSCKCS with polyhistidine tag at the N-terminus
Expression System	HEK293
Species of Origin	Human
Affinity Tag	His Tag (N-term)
Endotoxin Level	<0.1 EU per 1 µg of the protein by the LAL method.
Activity	Measure by its ability to inhibit the IL-4 dependent proliferation in TF-1 cells. The ED ₅₀ for this effect is < 0.1 ng/mL.
Purity	>95% as determined by SDS-PAGE.
Form	Lyophilized
Storage Buffer	Lyophilized from a 0.2 µm filtered solution of PBS, pH 7.0.
Reconstitution	It is recommended to reconstitute the lyophilized protein in 10 mM HCl to a concentration not less than 200 µg/mL and incubate the stock solution for at least 20 min to ensure sufficient re-dissolved.
Stability & Storage	This product is stable after storage at: <ul style="list-style-type: none"> • -20°C for 12 months in lyophilized state from date of receipt. • -20°C or -80°C for 1 month under sterile conditions after reconstitution.

Avoid repeated freeze/thaw cycles.



SDS-PAGE analysis of recombinant human TGF beta 1 protein.

For research use only.