

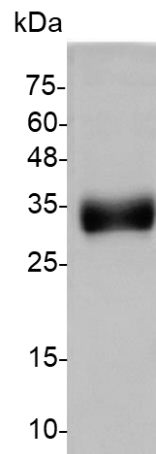
**Recombinant Human PD-L1 Protein**

v. 240101

---

<b>Catalog number</b>	C01196-100UG / C01196-1MG
<b>Package</b>	100 µg / 1 mg
<b>Description</b>	PD-L1 regulates immune responses by binding to the immunoinhibitory receptor PD-1 on activated T-cells and B-cells. This interaction can suppress T-cell responses by inducing apoptosis and arresting cell-cycle progression. In cancer, PD-L1's role in reducing antigen-specific T cells can promote tumor growth and immune evasion. As a result, PD-L1 is considered as a potential therapeutic target for autoimmune diseases and cancer.
<b>Expression System</b>	HEK293
<b>Sequence</b>	Phe19-Arg238
<b>Species of Origin</b>	Human
<b>Endotoxin level</b>	<0.1 EU per 1 µg of the protein by the LAL method.
<b>Purity</b>	>95% as determined by SDS-PAGE.
<b>Form</b>	Lyophilized
<b>Storage Buffer</b>	Lyophilized from a 0.2 µm filtered solution of PBS, pH 7.4.
<b>Reconstitution</b>	It is recommended to reconstitute the lyophilized protein in sterile H <sub>2</sub> O to a concentration not less than 200 µg/mL and incubate the stock solution for at least 20 min to ensure sufficient re-dissolved.
<b>Stability &amp; Storage</b>	This product is stable after storage at: <ul style="list-style-type: none"><li>• -20°C for 12 months in lyophilized state from date of receipt.</li><li>• -20°C or -80°C for 1 month under sterile conditions after reconstitution.</li></ul> Avoid repeated freeze/thaw cycles.

---



SDS-PAGE analysis of recombinant human PD-L1.

*For research use only.*