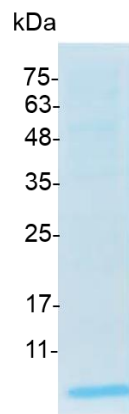


**CXCL1 (C-C motif chemokine ligand 1), Mouse**

v. 231101

<b>Catalog number</b>	C02073-5UG / C02073-20UG / C02073-100UG
<b>Package</b>	5 µg / 20 µg / 100 µg
<b>Description</b>	CXCL1/GROα act as a growth factor for melanoma cells. It is also a chemotaxin for neutrophils. Like other alpha chemokines, this protein is potent neutrophil attractant and activator and is also affect basophils. Clinical research show that CXCL1 protein may be a therapeutic target as well as a diagnostic marker in ovarian cancer.
<b>Source</b>	<i>Escherichia coli</i>
<b>Sequence</b>	NELRCQCLQTMAGIHLKNIQSLKVLPSGPHCTQTEVIATLKNGREACLDPEAPL VQKIVQKMLKGVPK
<b>Endotoxin level</b>	<0.1 EU per 1 µg of the protein by the LAL method.
<b>Activity</b>	Measure by its ability to chemoattract BaF3 cells transfected with human CXCR2. The ED <sub>50</sub> for this effect is <15 ng/mL.
<b>Purity</b>	>95% as determined by SDS-PAGE.
<b>Form</b>	Lyophilized
<b>Storage Buffer</b>	Lyophilized from a 0.2 µm filtered solution containing 50 mM Tris and 150 mM NaCl, pH 8.5.
<b>Reconstitution</b>	It is recommended to reconstitute the lyophilized protein in sterile H <sub>2</sub> O to a concentration not less than 200 µg/mL and incubate the stock solution for at least 20 min to ensure sufficient re-dissolved.
<b>Stability &amp; Storage</b>	This product is stable after storage at: <ul style="list-style-type: none"><li>• -20°C for 12 months in lyophilized state from date of receipt.</li><li>• -20°C or -80°C for 1 month under sterile conditions after reconstitution.</li></ul> Avoid repeated freeze/thaw cycles.



SDS-PAGE analysis of recombinant mouse CXCL1

*For Research Use Only.*