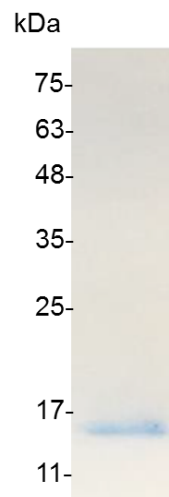


CXCL10 (C-X-C motif chemokine 10), Swine

v. 231101

Catalog number	C03023-5UG / C03023-20UG / C03023-100UG
Package	5 µg / 20 µg / 100 µg
Description	CXCL10 ,belongs to the CXC chemokine family, is also known as IP-10. CXCL10 was originally identified as a respositor to IFN-gamma in monocytes, endothelial cells and fibroblasts. The effects of this chemokine can be induced by binding to the cell surface chemokine receptor CXCR3. Research shows that CXCL10 is a chemoattractant for activated T-lymphocytes, monocytes and macrophages. It also has other functions, such as promotion of T cell adhesion to endothelial cell.
Source	<i>Escherichia coli</i>
Sequence	PLSRTVRCTCIKISDRPVNPRSLEKLEMIPASQSCPHVEIATMKKNGEKRLNP ESKTIKNLLKAISKERSKRSPRTQREA with polyhistidine tag at the N-terminus
Endotoxin level	<0.1 EU per 1 µg of the protein by the LAL method.
Activity	Measure by its ability to chemoattract BaF3 cells transfected with human CXCR2. The ED ₅₀ for this effect is <4 ng/mL.
Purity	>98% as determined by SDS-PAGE.
Form	Lyophilized
Storage Buffer	Lyophilized from a 0.2 µm filtered solution of PBS, pH 7.4.
Reconstitution	It is recommended to reconstitute the lyophilized protein in sterile H ₂ O to a concentration not less than 200 µg/mL and incubate the stock solution for at least 20 min to ensure sufficient re-dissolved.
Stability & Storage	This product is stable after storage at: <ul style="list-style-type: none"> -20°C for 12 months in lyophilized state from date of receipt. -20°C or -80°C for 1 month under sterile conditions after reconstitution. Avoid repeated freeze/thaw cycles.



SDS-PAGE analysis of recombinant swine CXCL10

For research use only.