

**Croyez GMP® IL-15 (Interleukin-15), Human**

v. 231201

<b>Catalog number</b>	C01017-GMP-100 / C01017-GMP-1000
<b>Package</b>	100 µg / 1 mg
<b>Description</b>	Interleukin-15 (IL-15) is a cytokine with structural similarity to Interleukin-2 (IL-2). Like IL-2, IL-15 binds to and signals through a complex composed of IL-2/IL-15 receptor beta chain (CD122) and the common gamma chain (gamma-C, CD132). IL-15 is secreted by mononuclear phagocytes (and some other cells) following infection by virus(es). This cytokine induces cell proliferation of natural killer cells; cells of the innate immune system whose principal role is to kill virally infected cells.
<b>Expression System</b>	Escherichia coli
<b>Species of Origin</b>	Human
<b>Affinity Tag</b>	His Tag (C-term)
<b>Sequence</b>	Asn49-Ser162
<b>Endotoxin level</b>	<0.05 EU per 1 µg of the protein by the LAL method.
<b>Activity</b>	Measure by its ability to induce proliferation in CTLL-2 cells. The ED <sub>50</sub> for this effect is < 3 ng/mL. The specific activity of recombinant Croyez GMP® human IL-15 is approximately 2.5 x 10 <sup>7</sup> IU/mg, which is calibrated against the human IL-15 WHO International Standard (NIBSC code: 95/554).
<b>Purity</b>	>98% as determined by SDS-PAGE analysis.
<b>Mycoplasma</b>	Not detected
<b>Form</b>	Lyophilized
<b>Storage Buffer</b>	Lyophilized from a 0.2 µm filtered solution of PBS, pH 8.0.
<b>Reconstitution</b>	It is recommended to reconstitute the lyophilized protein in sterile H <sub>2</sub> O to a concentration not less than 0.5 mg/mL and incubate the stock solution for at least 20 min to ensure sufficient re-dissolved.
<b>Stability &amp; Storage</b>	<p>This product is stable after storage at:</p> <ul style="list-style-type: none"> <li>-20°C for 12 months in lyophilized state from date of receipt.</li> <li>-20°C or -80°C for 6 months under sterile conditions after reconstitution.</li> </ul> <p>Avoid repeated freeze/thaw cycles.</p>

---

Croyez GMP® recombinant proteins are manufactured in ISO 13485:2016 and GMP-certified facility. The processes include:

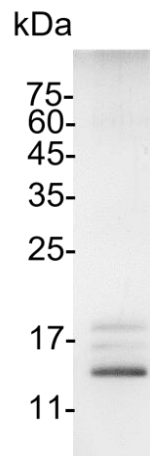
**Specification**

- Animal-free reagent and laboratory
- Manufactured and tested under GMP guideline
- Testing and traceability of raw material
- Records of the maintenance and equipment calibration
- Personnel training records
- Batch-to-batch consistency
- Documentation of QA control and process changes
- Manufactured and tested under an ISO 13485:2016 certified quality management system
- Stability monitor of product shelf-life

---

**Reference**

1. Abadie V, Jabri B. (2014) Immunol Rev. 260,1: 221-34.
2. Patidar, M. et al. (2016) Cytokine Growth Factor Rev. 31: 49-59.
3. Guo, Y. et al. (2017) Cytokine Growth Factor Rev. 38: 10-21.
4. Perera, P. et al. (2012) Microbes Infect. 14(3): 247–261.



SDS-PAGE analysis of Croyez GMP® IL-15, Human

---

*For Research Use Only. Not for use in diagnostic or therapeutic procedures.*