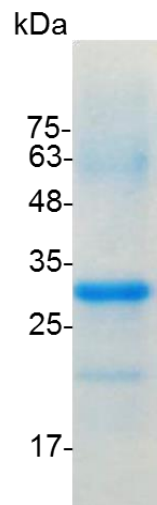


Catalog number	C01170-5UG / C01170-20UG / C01170-100UG
Package	5 µg / 20 µg / 100 µg
Description	Epithelial cell adhesion molecule (EpCAM) / CD326 is a pan-epithelial differentiation antigen that is expressed on almost all carcinomas as 17-1A(mAb) antigen. Besides, EpCAM is also involved in cell signaling, migration, proliferation, and differentiation. It is intricately linked with the Cadherin-Catenin pathway and hence the fundamental WNT pathway responsible for intracellular signaling and polarity. Recently, The epithelial cell adhesion molecule (Ep-CAM) is known to express in most epithelial malignancies and was reported as a tumor marker or a candidate of molecular targeting therapy. EpCAM can be used as diagnostic marker for various cancers. It appears to play a role in tumorigenesis and metastasis of carcinomas, so it can also act as a prognostic marker and as a potential target for immunotherapeutic strategies.
Source	<i>Escherichia coli</i>
Sequence	MQEEVCENYKLAVNCFVNNNRQCQCTSVGAQNTVICSKLAAKCLVMKAEMN GSKLGRRRAKPEGALQNDGLYDPDCDESGLFKAKQCNGTSMCWCVNTAGVR RTDKDTEITCSERVRTYWIIIELKHKAREKPYDSKSLRTALQKEITTRYQLDPKFIT SILYENNVITIDLQNSSQKTQNDVDIADVAYYFEKDKGESLFHSHKMDLTVNG EQLDLDPGQTLIYYVDEKAPEFSMQGLK with polyhistidine tag at the C-terminus
Endotoxin level	<0.1 EU per 1 µg of the protein by the LAL method.
Activity	Measure by the ability of the immobilized protein to support the adhesion of the 3T3 cells. The ED ₅₀ for this effect is 0.2-1.7 ng/mL.
Purity	>95% as determined by SDS-PAGE.
Form	Lyophilized
Storage Buffer	Lyophilized from a 0.2 µm filtered solution of PBS, pH 8.0.
Reconstitution	It is recommended to reconstitute the lyophilized protein in sterile H ₂ O to a concentration not less than 200 µg/mL and incubate the stock solution for at least 20 min to ensure sufficient re-dissolved.
Stability & Storage	This product is stable after storage at: <ul style="list-style-type: none"> -20°C for 12 months in lyophilized state from date of receipt. -20°C or -80°C for 1 month under sterile conditions after reconstitution. Avoid repeated freeze/thaw cycles.



SDS-PAGE analysis of recombinant human CD326

For research use only.