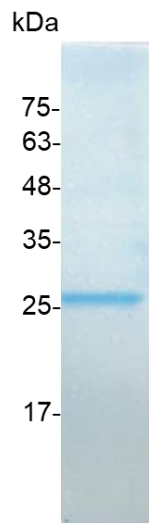


GIF (Gastric intrinsic factor), Human

v. 231001

Catalog number	C01169-5UG / C01169-20UG / C01169-100UG
Package	5 µg / 20 µg / 100 µg
Description	Intrinsic factor (IF), also known as gastric intrinsic factor (GIF), is a glycoprotein produced by the parietal cells of the stomach. It is necessary for the absorption of vitamin B12 I in the ileum of the small intestine. The gastric intrinsic factor protein is encoded by the GIF gene in humans.
Source	<i>Escherichia coli</i>
Sequence	MAWFALYLLSLLWATAGTSTQTQSSCSVPSAQEPLVNGIQVLMENSVTSSAYP NPSILIAMNLAGAYNLKAQKLLTYQLMSSDNNDLTIGQLGLTIMALTSSCRDPGD KVSILQRQMENWAPSSPNAEASAFYGPSLAILALCQKNSEATLPIAVRFAKTLA NSSPFNVDTGAMATLALTCMYNKIPVGSEEGYRSLFGQVLKDIVEKISMKIKDN GIIGDIYSTGLAMQALSVTPEPSKKEWNCKKTTDMILNEIKQGKFHNPMSIAQILP SLKGKTYLDVPQVTCSPDHEVQPTLPSNPGPGPTSASNITVIYTINNQLRGVELL FNETINVSVKSGSVLLVLEEAAQRKNPMFKFETTMTSWGLVVSSINNIAENVNH KTYWQFLSGVTPPLNEGVADYIPFNHEHITANFTQY with polyhistidine tag at the C-terminus
Endotoxin level	<0.1 EU per 1 µg of the protein by the LAL method.
Purity	>98% as determined by SDS-PAGE.
Form	Lyophilized
Storage Buffer	Lyophilized from a 0.2 µm filtered solution of PBS, pH 8.0.
Reconstitution	It is recommended to reconstitute the lyophilized protein in sterile H ₂ O to a concentration not less than 200 µg/mL and incubate the stock solution for at least 20 min to ensure sufficient re-dissolved.
Stability & Storage	This product is stable after storage at: <ul style="list-style-type: none"> -20°C for 12 months in lyophilized state from date of receipt. -20°C or -80°C for 1 month under sterile conditions after reconstitution. Avoid repeated freeze/thaw cycles.



SDS-PAGE analysis of recombinant human GIF

For research use only.