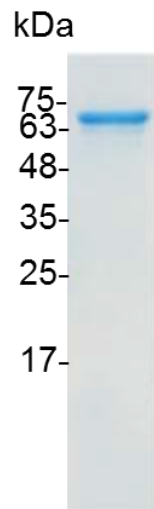


Catalog number	C01143-5UG / C01143-20UG / C01143-100UG
Package	5 µg / 20 µg / 100 µg
Description	Matrix metalloproteinases (MMPs) are a family of endoproteases that require zinc and calcium for expressing catalytic activity. MMP2 (Matrix Metallopeptidase 2) is a Protein-Coding gene. Diseases associated with MMP2 include Multicentric Osteolysis, Nodulosis, and Arthropathy.
Source	<i>Escherichia coli</i>
Sequence	<p> MYNFFPRPKWKDKNQITYRIIGYTPDLDPETVDDAFARAFQVWSDVTPLRFSRI HDGEADIMINFGRWEGHDGYPFDGKDLLAHAFAPGTGVGGDSHFDDDELWT LGEGQVVRVKYGNADGEYCKFPFLFNGKEYNSCTDTGRSDGFLWCSTTYNFE KDGKYGFCPHEALFTMGGNAEQPCKFPFRFQGTSYDSCTTEGRTDGYRWC GTTEDYDRDKKYGFCPETAMSTVGGNSEGAPCVFPFTFLGNKYESCTSAGRS DGKMWCAATTANYDDDRKWGFCPDQGYSLFLVAAHEFGHAMGLEHSQDPGAL MAPIYTYTKNFRLSQDDIKGIQELYGASPDIDLGTGPTPTLGPVTPEICKQDIVFD GIAQIRGEIFFFKDRFIWRTVTPRDKPMGPLLVATFWPELPEKIDAVYEAPQEEK AVFFAGNEYWIYSASTLERGYPKPLTSLGLPPDVQRVDAAFNWSKNKTYIFAG DKFWRYNEVKKKMDPGFPKLIADAWNAIPDNLDVVDLQGGGHSYFFKGAYYL KLENQSLKSVKFGSIKSDWLGC with polyhistidine tag at the C-terminus </p>
Endotoxin level	<0.1 EU per 1 µg of the protein by the LAL method.
Purity	>95% as determined by SDS-PAGE.
Form	Lyophilized
Storage Buffer	Lyophilized from a 0.2 µm filtered solution of PBS, pH 8.0.
Reconstitution	It is recommended to reconstitute the lyophilized protein in sterile H ₂ O to a concentration not less than 200 µg/mL and incubate the stock solution for at least 20 min to ensure sufficient re-dissolved.
Stability & Storage	<p>This product is stable after storage at:</p> <ul style="list-style-type: none"> -20°C for 12 months in lyophilized state from date of receipt. -20°C or -80°C for 1 month under sterile conditions after reconstitution. <p>Avoid repeated freeze/thaw cycles.</p>



SDS-PAGE analysis of recombinant human MMP2 (active)

For research use only.