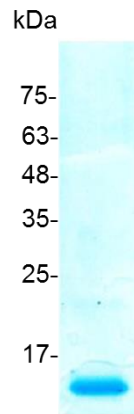


IGF-II (Insulin-like growth factor-II), Human

v. 231001

Catalog number	C01115-5UG / C01115-20UG / C01115-100UG
Package	5 µg / 20 µg / 100 µg
Description	Insulin-like growth factor 2 (IGF-2) is one of three protein hormones that share structural similarity to insulin. The major role of IGF-2 is as a growth promoting hormone during gestation. It is believed to be a major fetal growth factor in contrast to Insulin-like growth factor 1, which is a major growth factor in adults.
Source	<i>Escherichia coli</i>
Sequence	AYRPSETLCGGELVDTLQFVCGDRGFYFSRPASRVSRRSRGIVEECCFRSCDL ALLETYCATPAKSE with polyhistidine tag at the N-terminus
Endotoxin level	<0.1 EU per 1 µg of the protein by the LAL method.
Activity	Measure by its ability to induce MCF-7 cells proliferation. The ED ₅₀ for this effect is <3 ng/mL. The specific activity of recombinant human IGF-II is > 3x 10 ⁵ IU/mg.
Purity	>98% as determined by SDS-PAGE.
Form	Lyophilized
Storage Buffer	Lyophilized from a 0.2 µm filtered solution of PBS, pH 8.0.
Reconstitution	It is recommended to reconstitute the lyophilized protein in sterile H ₂ O to a concentration not less than 200 µg/mL and incubate the stock solution for at least 20 min to ensure sufficient re-dissolved.
Stability & Storage	<p>This product is stable after storage at:</p> <ul style="list-style-type: none"> -20°C for 12 months in lyophilized state from date of receipt. -20°C or -80°C for 2 weeks under sterile conditions after reconstitution. <p>Avoid repeated freeze/thaw cycles.</p>



SDS-PAGE analysis of recombinant human IGF-II

For research use only.