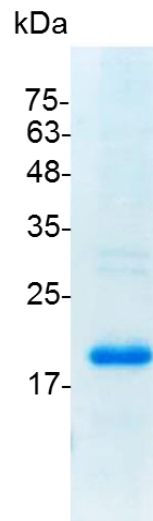


CD30L (CD30 ligand), Human

v. 231001

Catalog number	C01053-5UG / C01053-20UG / C01053-100UG
Package	5 µg / 20 µg / 100 µg
Description	<p>CD30L is a member of the TNF superfamily, and is a type-II membrane-associated glycoprotein. It is primarily expressed on certain B cells, T cells, and monocytes. In lymphomas and various chronically inflamed tissues, CD30L can specifically bind to CD30 (receptor), which is expressed on activated, but not resting, B and T cells. CD30L can interact with CD30 to start a signaling cascade that can finally lead to the activation of NF-κB. CD30L/CD30 signaling applies pleiotropic effects on normal cells, for example: cell death, differentiation, and cell division. CD30L/CD30 signaling can also affect some kinds of diseases, like Hodgkin's lymphoma, allergic inflammation, diabetes and mycobacterial infection.</p>
Source	<i>Escherichia coli</i>
Sequence	<p>MQRTDSIPNSPDNVPLKGGNCSEDLICILKRAPFKKSWAYLQVAKHLNKTCLS WNKDGILHGVRYQDGNLVIQFPGLYFIICQLQLVQCPNNSVDLKELELLINKHIIKK QALVTVCESGMQTKHVYQNLSQFLLDYLQVNTTISVNVDTFQYIDTSTFPLENV LSIFLYSNSD with polyhistidine tag at the C-terminus</p>
Endotoxin level	<0.01 EU per 1 µg of the protein by the LAL method.
Activity	Measure by its ability to induce IL-8 secretion in human PBMCs. The ED ₅₀ for this effect is <2 ng/mL.
Purity	>98% as determined by SDS-PAGE.
Form	Lyophilized
Storage Buffer	Lyophilized from a 0.2 µm filtered solution of PBS, pH 7.4.
Reconstitution	It is recommended to reconstitute the lyophilized protein in sterile H ₂ O to a concentration not less than 200 µg/mL and incubate the stock solution for at least 20 min to ensure sufficient re-dissolved.
Stability & Storage	<p>This product is stable after storage at:</p> <ul style="list-style-type: none"> -20°C for 12 months in lyophilized state from date of receipt. -20°C or -80°C for 1 month under sterile conditions after reconstitution. <p>Avoid repeated freeze/thaw cycles.</p>



SDS-PAGE analysis of recombinant human CD30L

For research use only.