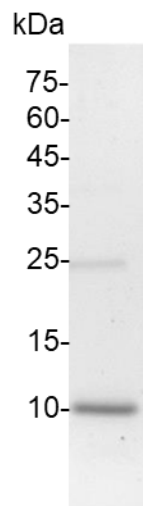


**BMP-4 (Bone morphogenetic protein-4), Human**

v. 231001

<b>Catalog number</b>	C01064-5UG / C01064-20UG / C01064-100UG
<b>Package</b>	5 µg / 20 µg / 100 µg
<b>Description</b>	Bone morphogenetic protein 4 is a protein that in humans is encoded by BMP4 gene. BMP4 is found on chromosome 14q22-q23. BMP4 is a member of the bone morphogenetic protein family which is part of the transforming growth factor-beta superfamily. The superfamily includes large families of growth and differentiation factors. BMP4 is highly conserved evolutionarily. BMP4 is found in early embryonic development in the ventral marginal zone and in the eye, heart blood and otic vesicle.
<b>Source</b>	<i>Escherichia coli</i>
<b>Sequence</b>	MKKNKNCRRHSLYVDFSDVGWWDWIVAPPGYQAFYCHGDCPFPLADHLNSTN HAIVQTLVNSVNSSIPKACCVPTELSAISMLYLDEYDKVVLKKNYQEMVVEGCGC R with polyhistidine tag at the C-terminus
<b>Endotoxin level</b>	<0.1 EU per 1 µg of the protein by the LAL method.
<b>Activity</b>	Measure by its ability to induce alkaline phosphatase production by ATDC5 cells. The ED <sub>50</sub> for this effect is <0.58 ng/mL.
<b>Purity</b>	>95% as determined by SDS-PAGE.
<b>Form</b>	Lyophilized
<b>Storage Buffer</b>	Lyophilized from a 0.2 µm filtered solution containing 20 mM sodium carbonate, pH 9.0.
<b>Reconstitution</b>	It is recommended to reconstitute the lyophilized protein in 4 mM HCl to a concentration not less than 200 µg/mL and incubate the stock solution for at least 20 min to ensure sufficient re-dissolved.
<b>Stability &amp; Storage</b>	This product is stable after storage at: <ul style="list-style-type: none"> <li>-20°C for 12 months in lyophilized state from date of receipt.</li> <li>-20°C or -80°C for 1 month under sterile conditions after reconstitution.</li> </ul> Avoid repeated freeze/thaw cycles.



SDS-PAGE analysis of recombinant human BMP-4

*For research use only.*