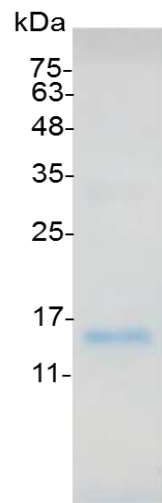


Catalog number	C01025-5UG / C01025-20UG / C01025-100UG
Package	5 µg / 20 µg / 100 µg
Description	Interleukin 20 (IL20) is a cytokine structurally related to interleukin 10 (IL-10). This cytokine has been shown to transduce its signal through signal transducer and activator of transcription 3 (STAT3) in keratinocytes. A specific receptor for this cytokine is found to be expressed in skin and upregulated dramatically in psoriatic skin, suggesting a role for this protein in epidermal function and psoriasis.
Source	<i>Escherichia coli</i>
Sequence	MLKTLNLGSCVIATNLQEIRNGFSEIRGSVQAKDGNIDIRILRRTESLQDTKPANR CCLLRHLLRLYLDRVFKNYQTPDHYTLRKISSLANSLTIKKDLRLCHAHMTCHC GEEAMKKYSQILSHFEKLEPQAAVVKALGELDILLQWMEETE with polyhistidine tag at the C-terminus
Endotoxin level	<0.1 EU per 1 µg of the protein by the LAL method.
Activity	Measure by its ability to chemoattract BaF3 cells transfected with human IL-20R alpha and IL-20R beta. The ED ₅₀ for this effect is <0.2 ng/mL.
Purity	>98% as determined by SDS-PAGE.
Form	Lyophilized
Storage Buffer	Lyophilized from a 0.2 µm filtered solution of PBS, pH 8.0.
Reconstitution	It is recommended to reconstitute the lyophilized protein in sterile H ₂ O to a concentration not less than 200 µg/mL and incubate the stock solution for at least 20 min to ensure sufficient re-dissolved.
Stability & Storage	This product is stable after storage at: <ul style="list-style-type: none"> -20°C for 12 months in lyophilized state from date of receipt. -20°C or -80°C for 1 month under sterile conditions after reconstitution. Avoid repeated freeze/thaw cycles.



SDS-PAGE analysis of recombinant human IL-20

For research use only.