

<b>Catalog number</b>	C01012-GMP-100 / C01012-GMP-1000
<b>Package</b>	100 µg / 1 mg
<b>Description</b>	Interleukin-10 (IL-10), also known as human cytokine synthesis inhibitory factor (CSIF), is an anti-inflammatory cytokine. In humans, IL-10 is encoded by the IL-10 gene. IL-10 signals through a receptor complex consisting of two IL-10 receptor-1 and two IL-10 receptor-2 proteins. Consequently, the functional receptor consists of four IL-10 receptor molecules. IL-10 binding induces STAT3 signaling via the phosphorylation of the cytoplasmic tails of IL-10 receptor-1 + IL-10 receptor-2 by JAK1 and Tyk2 respectively.
<b>Expression System</b>	<i>Escherichia coli</i>
<b>Species of Origin</b>	Human
<b>Affinity Tag</b>	His Tag (C-term)
<b>Sequence</b>	Ser19-Asn178
<b>Endotoxin level</b>	<0.05 EU per 1 µg of the protein by the LAL method.
<b>Activity</b>	Measure by its ability to induce MC/9-2 cells proliferation. The ED <sub>50</sub> for this effect is <1 ng/mL. The specific activity of recombinant human IL-10 is approximately >1 x10 <sup>6</sup> IU/ mg.
<b>Purity</b>	>98% as determined by SDS-PAGE analysis.
<b>Mycoplasma</b>	Not detected
<b>Form</b>	Lyophilized
<b>Storage Buffer</b>	Lyophilized from a 0.2 µm filtered solution of PBS, pH 8.0.
<b>Reconstitution</b>	It is recommended to reconstitute the lyophilized protein in sterile H <sub>2</sub> O to a concentration not less than 0.5 mg/mL and incubate the stock solution for at least 20 min to ensure sufficient re-dissolved.
<b>Stability &amp; Storage</b>	<p>This product is stable after storage at:</p> <ul style="list-style-type: none"> <li>-20°C for 12 months in lyophilized state from date of receipt.</li> <li>-20°C or -80°C for 1 month under sterile conditions after reconstitution.</li> </ul> <p>Avoid repeated freeze/thaw cycles.</p>

---

Croyez GMP® recombinant proteins are manufactured in ISO 13485:2016 and GMP-certified facility. The processes include:

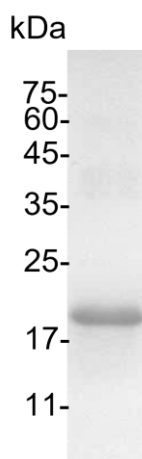
**Specification**

- Animal-free reagent and laboratory
- Manufactured and tested under GMP guideline
- Testing and traceability of raw material
- Records of the maintenance and equipment calibration
- Personnel training records
- Batch-to-batch consistency
- Documentation of QA control and process changes
- Manufactured and tested under an ISO 13485:2016 certified quality management system
- Stability monitor of product shelf-life

---

**Reference**

1. David M. Mosser and Xia Zhang. Immunol Rev. (2008) 226: 205–218.
2. Ouyang W, O'Garra A. (2019) Immunity. 50,4: 871-891.
3. Gabryšová, L. et al. (2014) Curr Top Microbiol Immunol. 380: 157-90.
4. Kevin N. Couper et al. (2008) J Immunol.180 (9) 5771-5777.



SDS-PAGE analysis of Croyez GMP® IL-10, Human

---

*For Research Use Only. Not for use in diagnostic or therapeutic procedures.*