

Catalog number	C01008-GMP-100 / C01008-GMP-1000
Package	100 µg / 1 mg
Description	Interleukin-6 (IL-6) is an interleukin that acts as both a pro-inflammatory cytokine and an anti-inflammatory myokine. In humans, it is encoded by the IL6 gene. In addition, osteoblasts secrete IL-6 to stimulate osteoclast formation. Smooth muscle cells in the tunica media of many blood vessels also produce IL-6 as a pro-inflammatory cytokine. IL-6's role as an anti-inflammatory myokine is mediated through its inhibitory effects on TNF-alpha and IL-1, and activation of IL-1RA and IL-10.
Expression System	<i>Escherichia coli</i>
Species of Origin	Human
Affinity Tag	His Tag (C-term)
Sequence	Val30-Met212
Endotoxin level	<0.05 EU per 1 µg of the protein by the LAL method.
Activity	Measure by its ability to induce proliferation in TF-1 cells. The ED ₅₀ for this effect is <0.5 ng/mL. The specific activity of recombinant human IL-6 is approximately >5 x 10 ⁸ IU/mg. Measure by its ability to induce proliferation in MCF-7 cells. The ED ₅₀ for this effect is <4.4 ng/mL.
Purity	>98% as determined by SDS-PAGE analysis.
Mycoplasma	Not detected
Form	Lyophilized
Storage Buffer	Lyophilized from a 0.2 µm filtered solution of PBS, pH 8.0.
Reconstitution	It is recommended to reconstitute the lyophilized protein in sterile H ₂ O to a concentration not less than 0.5 mg/mL and incubate the stock solution for at least 20 min to ensure sufficient re-dissolved.
Stability & Storage	<p>This product is stable after storage at:</p> <ul style="list-style-type: none"> -20°C for 12 months in lyophilized state from date of receipt. -20°C or -80°C for 1 month under sterile conditions after reconstitution. <p>Avoid repeated freeze/thaw cycles.</p>

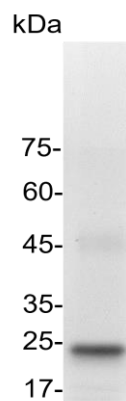
Croyez GMP® recombinant proteins are manufactured in ISO 13485:2016 and GMP-certified facility. The processes include:

Specification

- Animal-free reagent and laboratory
- Manufactured and tested under GMP guideline
- Testing and traceability of raw material
- Records of the maintenance and equipment calibration
- Personnel training records
- Batch-to-batch consistency
- Documentation of QA control and process changes
- Manufactured and tested under an ISO 13485:2016 certified quality management system
- Stability monitor of product shelf-life

Reference

1. Tanaka T. et al. (2014) *Cold Spring Harb Perspect Biol.* 6,10: a016295.
2. Mihara M. et al. (2012) *Clin Sci (Lond).* 122,4: 143-59.
3. Kishimoto T. (2010) *Int Immunol.* 22,5: 347-52.
4. Tanaka T. et al. (2016) *Adv Exp Med Biol.* 941: 79-88.



SDS-PAGE analysis of Croyez GMP® IL-6, Human

For Research Use Only. Not for use in diagnostic or therapeutic procedures.