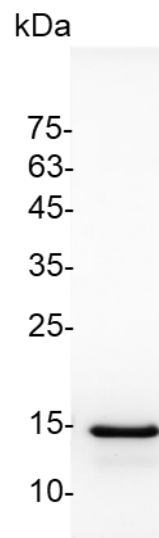


<b>Catalog number</b>	C01192-5UG / C01192-20UG / C01192-100UG
<b>Package</b>	5 µg / 20 µg / 100 µg
<b>Description</b>	<p>Interleukin-18 (L-18) is a cytokine that belongs to the IL-1 superfamily and is produced by macrophages and other cells. IL-18 works by binding to the interleukin-18 receptor, and together with IL-12 it induces cell-mediated immunity following infection with microbial products like lipopolysaccharide (LPS). After stimulation with IL-18, natural killer (NK) cells and certain T cells release another important cytokine called interferon-γ (IFN-γ) or type II interferon that plays an important role in activating the macrophages or other cells. The combination of this cytokine and IL12 has been shown to inhibit IL-4 dependent IgE and IgG1 production, and enhance IgG2a production in B cells. IL-18 binding protein (IL18BP) can specifically interact with this cytokine, and thus negatively regulate its biological activity.</p>
<b>Species of Origin</b>	Human
<b>Expression System</b>	<i>Escherichia coli</i>
<b>Sequence</b>	Tyr37-Asp193
<b>Endotoxin level</b>	<0.1 EU per 1 µg of the protein by the LAL method.
<b>Activity</b>	Measure by its ability to induce IFN gamma secretion in KG-1 cells. The ED <sub>50</sub> for this effect is <6 ng/mL.
<b>Purity</b>	>95% as determined by SDS-PAGE.
<b>Form</b>	Lyophilized
<b>Storage Buffer</b>	Lyophilized from a 0.2 µm filtered solution of PBS, pH 7.4.
<b>Reconstitution</b>	It is recommended to reconstitute the lyophilized protein in sterile H <sub>2</sub> O to a concentration not less than 200 µg/mL and incubate the stock solution for at least 20 min to ensure sufficient re-dissolved.
<b>Stability &amp; Storage</b>	<p>This product is stable after storage at:</p> <ul style="list-style-type: none"> <li>-20°C for 12 months in lyophilized state from date of receipt.</li> <li>-20°C or -80°C for 1 month under sterile conditions after reconstitution.</li> </ul> <p>Avoid repeated freeze/thaw cycles.</p>



SDS-PAGE analysis of recombinant human IL-18

*For research use only.*