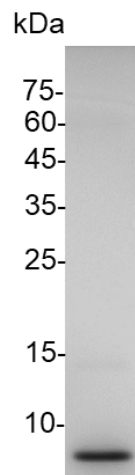


**Croyez GMP® EGF (Epidermal growth factor), Human**

v. 230601

<b>Catalog number</b>	C01191-GMP-100 / C01191-GMP-1000
<b>Package</b>	100 µg / 1 mg
<b>Description</b>	Epidermal growth factor (EGF) stimulates cell growth and differentiation by binding to its receptor, EGFR. Human EGF is a 6 kDa protein with 53 amino acid residues and three intramolecular disulfide bonds. EGF is present in various body fluids, including blood, milk, urine, saliva, seminal fluid, pancreatic juice, cerebrospinal fluid, and amniotic fluid. Biological activities ascribed to EGF include epithelial development, angiogenesis, inhibition of gastric acid secretion, fibroblast proliferation, and colony formation of epidermal cells in culture.
<b>Species of Origin</b>	Human
<b>Expression System</b>	<i>Escherichia coli</i>
<b>Sequence</b>	Asn971-Arg1023
<b>Endotoxin level</b>	<0.05 EU per 1 µg of the protein by the LAL method.
<b>Activity</b>	Measure by its ability to induce 3T3 cells proliferation. The ED <sub>50</sub> for this effect is <1.0 ng/mL. The specific activity of recombinant human EGF is approximately >1.0 x 10 <sup>6</sup> IU/mg.
<b>Purity</b>	>97% as determined by SDS-PAGE analysis.
<b>Form</b>	Lyophilized
<b>Reconstitution</b>	It is recommended to reconstitute the lyophilized protein in sterile H <sub>2</sub> O to a concentration not less than 0.5 mg/mL and incubate the stock solution for at least 20 min to ensure sufficient re-dissolved.
<b>Storage Buffer</b>	Lyophilized from a 0.2 µm filtered solution of PBS, pH 8.0.
<b>Stability &amp; Storage</b>	This product is stable after storage at: <ul style="list-style-type: none"> <li>-20°C for 12 months in lyophilized state from date of receipt.</li> <li>-20°C or -80°C for 1 month under sterile conditions after reconstitution.</li> </ul> Avoid repeated freeze/thaw cycles.
<b>Mycoplasma</b>	Not detected
<b>Specification</b>	Croyez GMP® recombinant proteins are manufactured in ISO 13485:2016 and GMP-certified facility. The processes include:

- 
- Animal-free reagent and laboratory
  - Manufactured and tested under GMP guideline
  - Testing and traceability of raw material
  - Records of the maintenance and equipment calibration
  - Personnel training records
  - Batch-to-batch consistency
  - Documentation of QA control and process changes
  - Manufactured and tested under an ISO 13485:2016 certified quality management system
  - Stability monitor of product shelf-life
- 



SDS-PAGE analysis of Croyez GMP® EGF, Human

*For Research Use Only. Not for use in diagnostic or therapeutic procedures.*