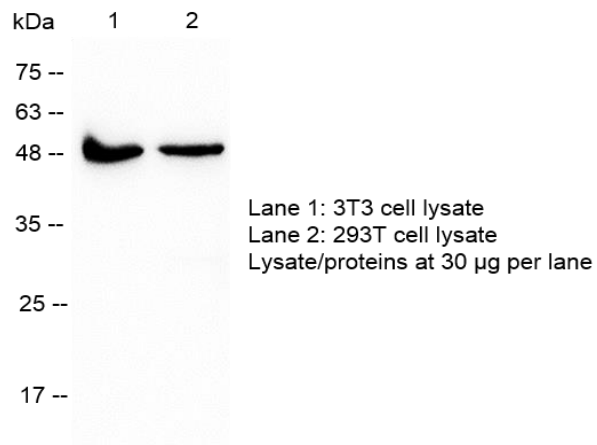


PRODUCT INFORMATION

Mouse anti-alpha tubulin mAb, clone 82-1

v. 230201

Catalog number	C06002-100UL / C06002-1000UL	
Package	100 μ L / 1000 μ L	
Description	Tubulin is the major building block of microtubules. Tubulin is a heterodimer that consist of alpha-tubulin and beta-tubulin. Both subunit have molecular weight of 50 kDa.	
Product type	Monoclonal, clone 82-1	
Concentration	Lot dependent	
Immunogen	Recombinant alpha tubulin protein	
Host	Mouse	
Reactivity	Mouse, human, hamster, monkey	
Conjugation	N/A	
Isotype	IgG2a kappa	
Purity	>95% (SDS-PAGE)	
Form	Liquid	
Storage buffer	Phosphate Buffered Saline containing 0.01% thimerosal, pH 7.4.	
Storage	Store at 4°C for at least 6 months. Store at -20°C for long-term preservation. Avoid repeated freeze/thaw cycles. Suggestion: Divide antibody into several vials. Keep only vials for usage at 4°C.	
Application	ELISA, WB, IFA	
Application Note	N/A	
Manual	Application	Dilution factor
	ELISA	1:5000-20000
	WB	1:1000-10000
	IFA	1:200-1000
Note: Application concentration may be various determined by the end user.		

Data

Western blotting analysis of anti-alpha tubulin mAb (1:2000)

For Research Use Only.