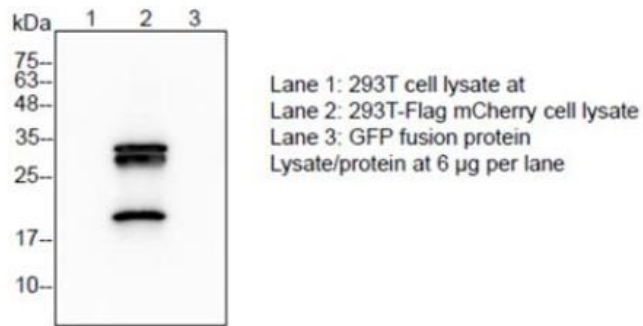


**Mouse anti-mCherry mAb**

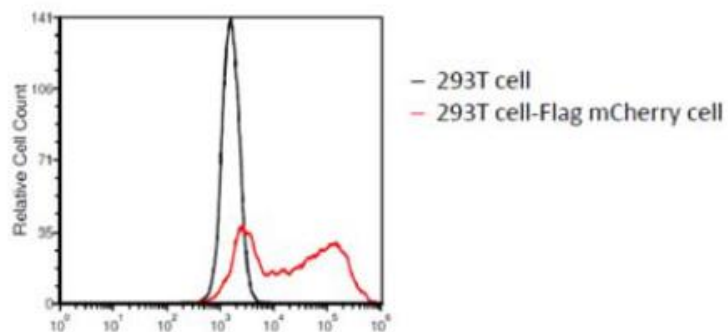
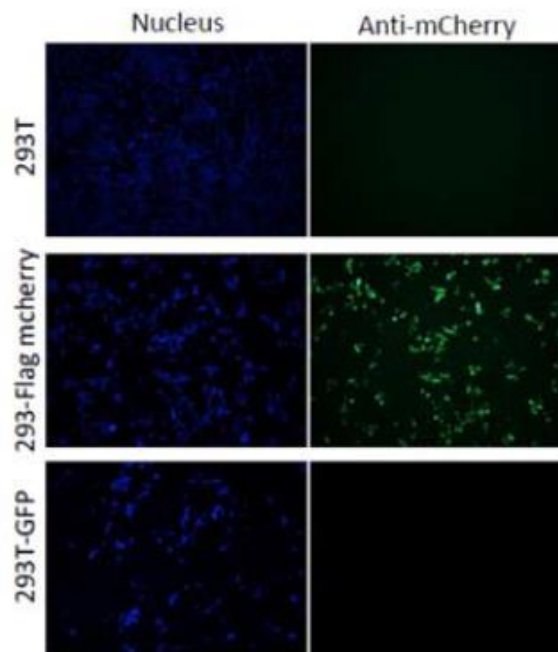
v. 230201

<b>Catalog number</b>	C05010-100UG / C05010-1000UG		
<b>Package</b>	100 µg / 1000 µg		
<b>Description</b>	mCherry protein is a basic red fluorescent protein derived from <i>Discosoma</i> sp.. Croyez mouse anti-mCherry mAb can recognize native and denature mCherry protein but not GFP.		
<b>Product type</b>	Monoclonal, clone 45-5		
<b>Concentration</b>	1 mg/mL		
<b>Immunogen</b>	Recombinant mCherry protein		
<b>Host</b>	Mouse		
<b>Reactivity</b>	Recognizes mCherry but not GFP.		
<b>Conjugation</b>	N/A		
<b>Isotype</b>	IgG2a kappa		
<b>Purity</b>	>95% (SDS-PAGE)		
<b>Form</b>	Liquid		
<b>Storage buffer</b>	Phosphate Buffered Saline containing 0.01% thimerosal, pH 7.4.		
<b>Storage</b>	Store at 4°C for at least 6 months. Store at -20°C for long-term preservation. Avoid repeated freeze/thaw cycles. Suggestion: Divide antibody into several vials. Keep only vials for usage at 4°C.		
<b>Application</b>	ELISA, WB, IP, IFA, FACS		
<b>Application Note</b>	N/A		
<b>Manual</b>	<b>Application</b>	<b>Dilution factor</b>	<b>Final concentration</b>
	ELISA	1:5000-20000	0.05-0.2 µg/mL
	WB	1:1000-10000	0.1-1 µg/mL
	IP	1:500-2000	0.5-2 µg/mL
	IFA	1:500-1000	1-2 µg/mL
	FACS	1:500-1000	1-2 µg/mL
Note: Application concentration may be various determined by the end user.			



Western blotting analysis of anti-mCherry mAb (1:2000)

Data



*For Research Use Only.*