

**Mouse anti-V5 tag mAb, clone 7-1-8**

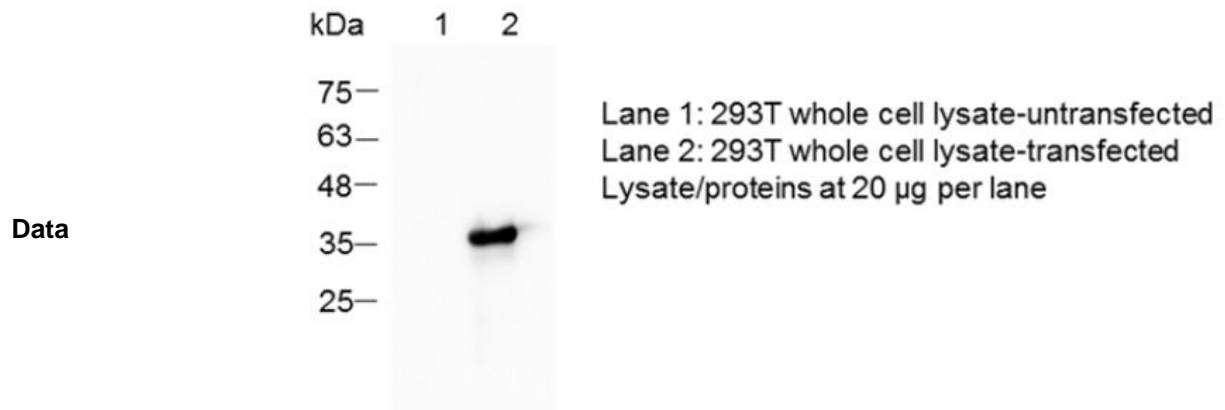
v. 230201

<b>Catalog number</b>	C05006-100UG / C05006-1000UG																				
<b>Package</b>	100 µg / 1000 µg																				
<b>Description</b>	Mouse anti-V5 tag mAb is specific to GKPIPPLLGLDST (V5) tag which can be applied to several immunoassays including ELISA, WB, IP, IFA and FACS. This antibody has been identified in several sources (bacteria, yeast and mammalian cells) of V5 tag fusion protein.																				
<b>Product type</b>	Monoclonal, clone 7-1-8																				
<b>Concentration</b>	1 mg/mL																				
<b>Immunogen</b>	Peptide: GKPIPPLLGLDST (V5)																				
<b>Host</b>	Mouse																				
<b>Reactivity</b>	Recognizes tag sequence of GKPIPPLLGLDST on either the N- or C-terminus of recombinant fusion protein.																				
<b>Conjugation</b>	N/A																				
<b>Isotype</b>	IgG2b kappa																				
<b>Purity</b>	>95% (SDS-PAGE)																				
<b>Form</b>	Liquid																				
<b>Storage buffer</b>	Phosphate Buffered Saline containing 0.01% thimerosal, pH 7.4.																				
<b>Storage</b>	Store at 4°C for at least 6 months. Store at -20°C for long-term preservation. Avoid repeated freeze/thaw cycles. Suggestion: Divide antibody into several vials. Keep only vials for usage at 4°C.																				
<b>Application</b>	ELISA, WB, IP, IFA, FACS																				
<b>Application Note</b>	N/A																				
<b>Manual</b>	<table border="1"> <thead> <tr> <th>Application</th> <th>Dilution factor</th> <th>Final concentration</th> </tr> </thead> <tbody> <tr> <td>ELISA</td> <td>1:5000-20000</td> <td>0.05-0.2 µg/mL</td> </tr> <tr> <td>WB</td> <td>1:1000-10000</td> <td>0.1-1 µg/mL</td> </tr> <tr> <td>IP</td> <td>1:500-2000</td> <td>0.5-2 µg/mL</td> </tr> <tr> <td>IFA</td> <td>1:500-1000</td> <td>1-2 µg/mL</td> </tr> <tr> <td>FACS</td> <td>1:500-1000</td> <td>1-2 µg/mL</td> </tr> </tbody> </table>	Application	Dilution factor	Final concentration	ELISA	1:5000-20000	0.05-0.2 µg/mL	WB	1:1000-10000	0.1-1 µg/mL	IP	1:500-2000	0.5-2 µg/mL	IFA	1:500-1000	1-2 µg/mL	FACS	1:500-1000	1-2 µg/mL		
Application	Dilution factor	Final concentration																			
ELISA	1:5000-20000	0.05-0.2 µg/mL																			
WB	1:1000-10000	0.1-1 µg/mL																			
IP	1:500-2000	0.5-2 µg/mL																			
IFA	1:500-1000	1-2 µg/mL																			
FACS	1:500-1000	1-2 µg/mL																			

---

Note: Application concentration may be various determined by the end user.

---



Western blotting analysis of anti-V5 tag mAb (1:5000)

---

*For Research Use Only.*