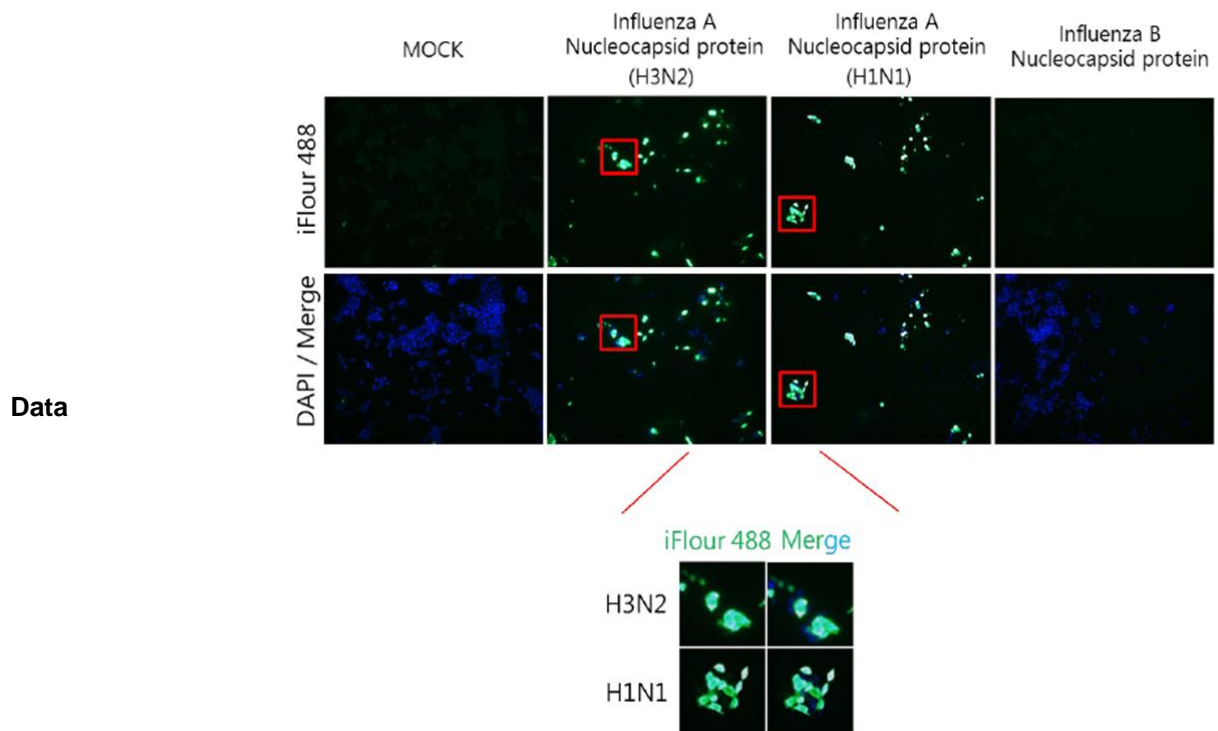


**Human anti-Influenza A virus NP Antibody, clone LGA7**

v. 230101

<b>Catalog number</b>	C10020-bulk / C10020-100UG	
<b>Package</b>	Customized package / 100 µg	
<b>Description</b>	Human anti-influenza A virus NP antibody only recognizes nucleocapsid protein (NP) of influenza A viruses but not influenza B viruses. Influenza A viruses are RNA viruses and their subtypes are labeled according to an H number (for the type of hemagglutinin) and an N number (for the type of neuraminidase).	
<b>Product type</b>	Recombinant Human IgG, clone LGA7	
<b>Concentration</b>	1 mg/mL	
<b>Immunogen</b>	N/A	
<b>Host</b>	N/A	
<b>Reactivity</b>	Recognize influenza A viruses NP in Lateral Flow and ELISA, when recombinant antibody (LGA7) was paired with human anti-influenza A virus NP antibody, clone LGA4 (cat. C10019).	
<b>Conjugation</b>	N/A	
<b>Isotype</b>	IgG <sub>1</sub>	
<b>Purity</b>	>98% (SDS-PAGE)	
<b>Form</b>	Liquid	
<b>Storage buffer</b>	Phosphate Buffered Saline containing 0.03% Proclin 300, pH 7.4.	
<b>Storage</b>	Store at 4°C for two weeks. Store at -20°C for one year. Avoid repeated freeze/thaw cycles.	
<b>Application</b>	ELISA, IFA, FACS, Lateral Flow	
<b>Application Note</b>	N/A	
<b>Manual</b>	<b>Application</b>	<b>Dilution factor</b>
	ELISA	1:5000-20000
	IFA	1:500-1000
	FACS	Assay dependent
Note: Application concentration may be various determined by the end user.		



Immunofluorescence analysis of Human anti-Influenza A virus NP Antibody, clone LGA7 (1:500)

*For Research Use Only.*