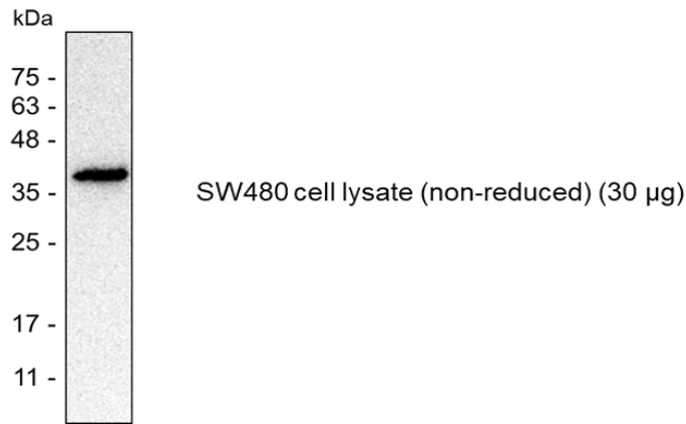


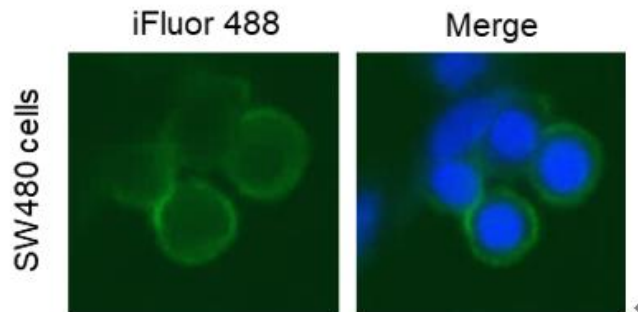
Mouse anti-human CD326 mAb, clone 1H7

v. 230101

Catalog number	C10001-bulk / C10001-100UG	
Package	Customized package / 100 µg	
Description	Mouse anti-human CD326 mAb recognize CD326 also known as Epithelial Cell Adhesion Molecule (EpCAM). CD326 expression has been reported to be a possible marker of early malignancy, with expression being increased in tumour cells.	
Product type	Monoclonal, clone 1H7	
Concentration	1 mg/mL	
Immunogen	MDA-MB-231 adenocarcinoma cell line	
Host	Mouse	
Reactivity	Human	
Conjugation	N/A	
Isotype	IgG2a Kappa	
Purity	>95% (SDS-PAGE)	
Form	Liquid	
Storage buffer	Phosphate Buffered Saline containing 0.01% thimerosal, pH 7.4.	
Storage	Store at 4°C for at least 6 months. Store at -20°C for long-term preservation. Avoid repeated freeze/thaw cycles.	
Application	ELISA, WB, IFA, FACS	
Application Note	N/A	
Manual	Application	Dilution factor
	ELISA	1:5000-20000
	WB	1:1000-5000
	IFA	1:500-1000
	FACS	1:500-1000
Note: Application concentration may be various determined by the end user.		



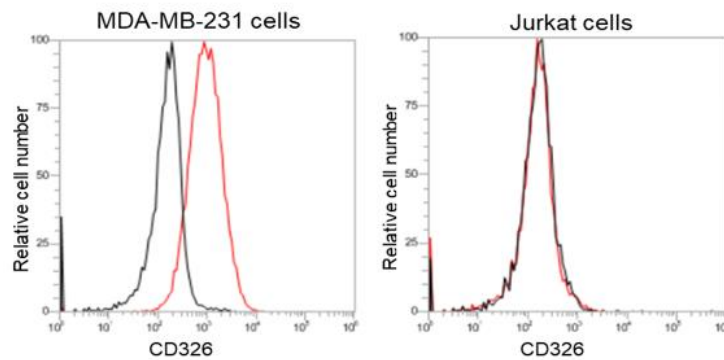
Western blotting analysis of anti-CD326 mAb (1:1000)



Data

Immunofluorescence analysis of anti-CD326 mAb

SW480 cells were fixed in 4% PFA. Experimental cells were stained with mouse anti-human CD326 monoclonal antibody (1:500) followed by secondary antibodies (goat anti-Mouse IgG-iFluor 488, 1:400, green). All cell nuclei were stained with Hoechst 33342 (blue).



Flow Cytometry analysis of anti-CD326 mAb

MDA-MB-231 and Jurkat cells were stained with mouse anti-human CD326 monoclonal antibody at 1 µg/ml (red) and without antibody control (black).

For Research Use Only.