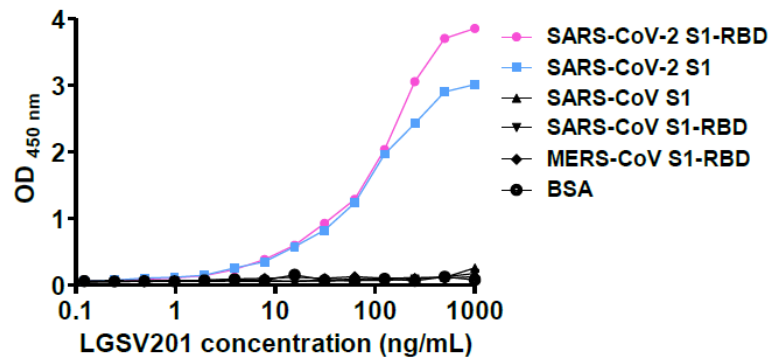


PRODUCT INFORMATION

**Mouse anti-SARS-CoV-2 Spike mAb, clone LGSV201**

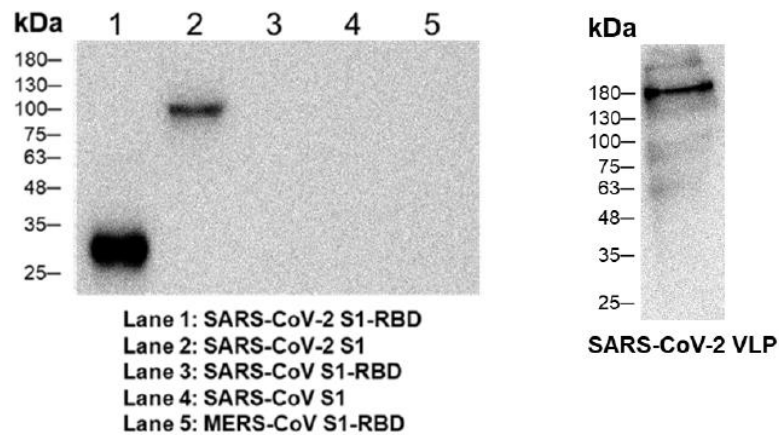
v. 230201

|  |   |                 |
|--|---|-----------------|
| Catalog number   | C10006-bulk / C10006-100UG  |                 |
| Package  | Customized package / 100 µg   |                 |
| Description  | This monoclonal antibody is derived from SARS-CoV-2 VLP immune mouse. Coronavirus Spike protein conducts the process that interacting with cellular receptor and membrane fusion to allow virus entering into target cells. Spike protein also can be used to define specificity of the virus, and be used as key target for vaccine design. The glycosylated Spike protein can be detected in the virus-infected cell and cell culture medium. The RBD is responsible for recognizing the cell surface receptor. |                 |
| Product type   | Monoclonal, clone LGSV201   |                 |
| Concentration  | 1 mg/mL   |                 |
| Immunogen  | SARS-CoV-2 VLP  |                 |
| Host   | Mouse   |                 |
| Reactivity   | SARS-CoV-2  |                 |
| Isotype  | IgG <sub>1</sub> kappa  |                 |
| Purity   | >98% (SDS-PAGE)   |                 |
| Form   | Liquid  |                 |
| Storage buffer   | Phosphate Buffered Saline pH 7.4.   |                 |
| Storage  | Store at 4°C for two weeks.<br>Store at -20°C for one year. Avoid repeated freeze/thaw cycles.  |                 |
| Application  | ELISA, WB, IFA, FACS  |                 |
| Application Note   | N/A   |                 |
| Manual   | Application   | Dilution factor |
|  | ELISA   | 1:5000-20000    |
|  | WB  | 1:1000-5000     |
|  | IFA   | 1:500-1000      |
|  | FACS  | Assay dependent |
| Note: Application concentration may be various determined by the end user. |   |                 |

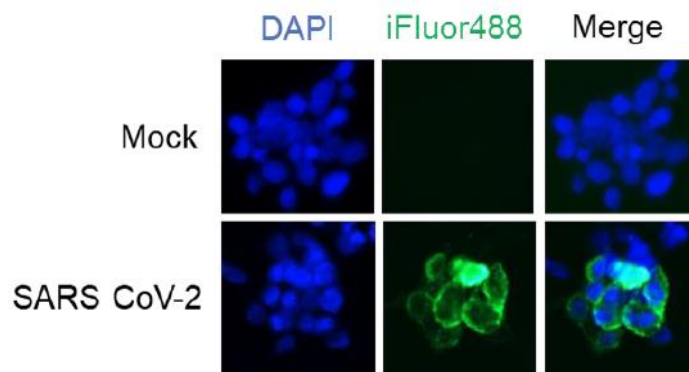


ELISA titration of Mouse anti-SARS-CoV-2 Spike mAb, clone LGSV201

Data



Western blotting analysis of Mouse anti-SARS-CoV-2 Spike mAb, clone LGSV201 (1:5000)



Immunofluorescence analysis of Mouse anti-SARS-CoV-2 Spike mAb, clone LGSV201 (1:1000)

*For Research Use Only.*