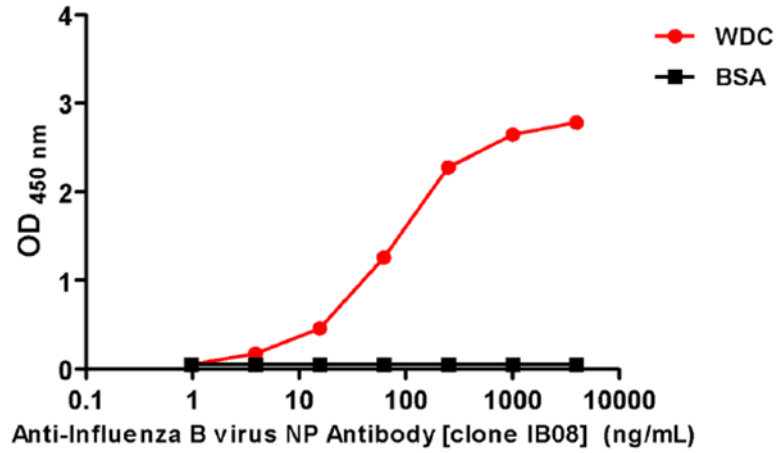


Anti-Influenza B virus NP Antibody [clone IB08]

v. 230301

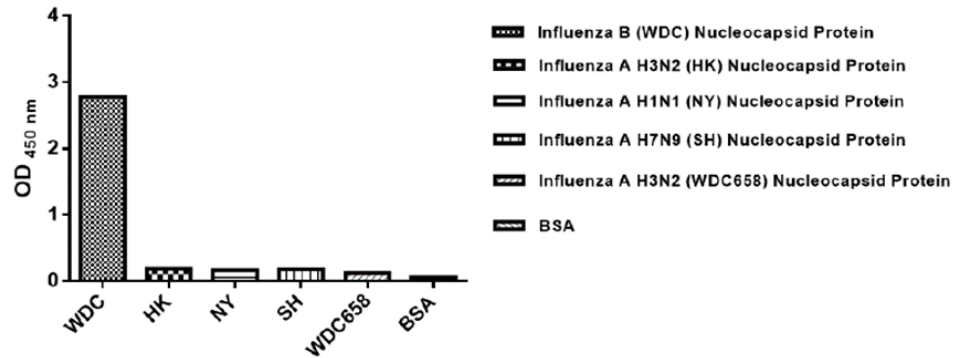
Catalog number	C10039-bulk / C10039-100UG	
Package	Customized package / 100 µg	
Description	Anti-Influenza B virus NP Antibody [clone IB08] only recognizes nucleocapsid protein (NP) of influenza B viruses but not influenza A viruses. Influenza B viruses are RNA viruses and divided into two genetic lineages (B/Yamagata and B/Victoria). Influenza B viruses are not classified by subtype like influenza A viruses.	
Product type	Monoclonal, clone IB08	
Concentration	1 mg/mL	
Immunogen	Recombinant Influenza B virus Nucleocapsid protein	
Host	Mouse	
Reactivity	Recognize Influenza B virus NP in Lateral Flow, when clone IB08 antibody was paired with Anti-Influenza B virus NP Antibody [clone IB07] (cat. C10038).	
Conjugation	N/A	
Isotype	IgG _{2a}	
Purity	>95% (SDS-PAGE)	
Form	Liquid	
Storage buffer	Phosphate Buffered Saline containing 0.03% Proclin 300, pH 7.4.	
Storage	Store at 4°C for two weeks. Store at -20°C for one year. Avoid repeated freeze/thaw cycles.	
Application	ELISA, CLIA, LFIA	
Application Note	N/A	
Manual	Application	Dilution factor
	ELISA	1:5000-20000
Note: Application concentration may be various determined by the end user.		



ELISA titration of Anti-Influenza B virus NP Antibody [clone IB08]

Titration curve of anti-Influenza B virus NP Antibody in ELISA. Red: WDC; Black: BSA (negative control).

Data



ELISA assay of Anti-Influenza B virus NP Antibody [clone IB08]

Indirect ELISA analysis was performed by coating a plate with recombinant NP protein of influenza B virus or influenza A virus and probing with anti-Influenza B virus NP Antibody.

For Research Use Only.