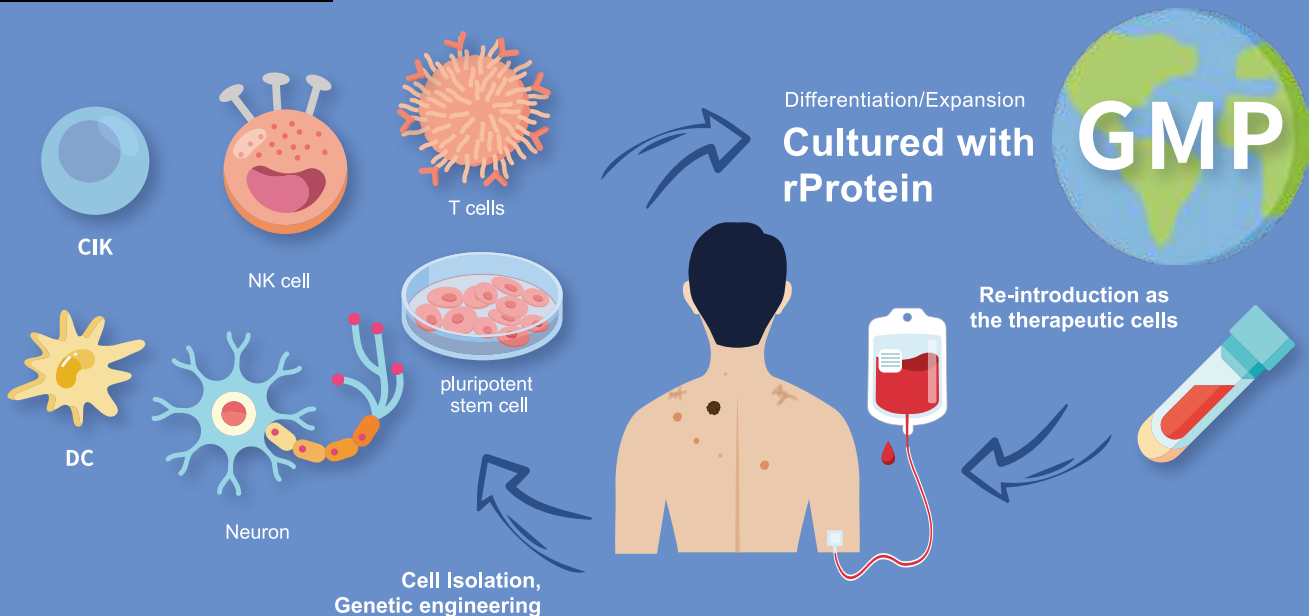




The Key Material of cell therapies: GMP-Grade recombinant proteins

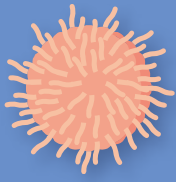
In these couple of years, more and more researchers and companies immerse themselves in cell therapies. Everyone anticipates the potential of cell therapies to cure diseases.



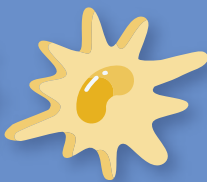
The following qualities are shared by Croyez GMP® products.

- Manufactured and tested under ISO13485:2016 certified quality management system
- Batch-to batch consistency
- Documentation of QA control and process changes
- Raw material control
- Animal-free reagent and laboratory
- Low endotoxin level
- High bio-activity

Which Croyez GMP® protein should you choose?



T cell



DC



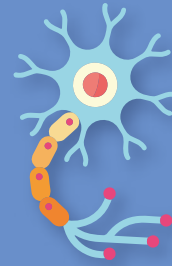
CIK



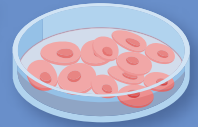
DC-CIK



NK cell



Neuron



PSC

- IL-1 β
- IL-2
- IL-4
- IL-7
- IL-12
- IL-15
- IL-18
- IL-21
- IL-23
- TGF β -1
- 4-1BBL
- IFN- γ

- IL-1 β
- IL-4
- IL-6
- IL-10
- TNF- α
- IFN- γ
- GM-CSF

- IL-1
- IL-2
- IL-12
- IL-15
- IFN- α
- IFN- γ

- IL-1 β
- IL-2
- IL-4
- IL-6
- IL-10
- IL-15
- IFN- γ
- GM-CSF
- TNF- α

- IL-2
- IL-15
- IL-21

- FGF
- Nogging
- EGF

- IL-3
- IL-6
- FGF-2
- Activin A
- HGF
- TGF β -1
- G-CSF
- Nogging
- Flt-3L
- EGF
- SCF
- TPO

*Available only RUO grade

Whatever your research interest, our products can help you at every stage of your process.

Catalog	Product	Package	Catalog	Product	Package
C01002-GMP	Croyez GMP® IL-1 beta	100 μ g / 1 mg	C01080-GMP	Croyez GMP® IFN gamma	100 μ g / 1 mg
C01004-GMP	Croyez GMP® IL-2	100 μ g / 1 mg	C01047-GMP	Croyez GMP® TNF alpha	100 μ g / 1 mg
C01005-GMP	Croyez GMP® IL-3	100 μ g / 1 mg	C01088-GMP	Croyez GMP® TGF beta 1	100 μ g / 1 mg
C01006-GMP	Croyez GMP® IL-4	100 μ g / 1 mg	C01119-GMP	Croyez GMP® Activin A	100 μ g / 1 mg
C01008-GMP	Croyez GMP® IL-6	100 μ g / 1 mg	C01126-GMP	Croyez GMP® TPO	100 μ g / 1 mg
C01009-GMP	Croyez GMP® IL-7	100 μ g / 1 mg	C01092-GMP	Croyez GMP® FGF-2 (154 a.a.)	100 μ g / 1 mg
C01012-GMP	Croyez GMP® IL-10	100 μ g / 1 mg	C01085-GMP	Croyez GMP® Flt-3 Ligand	100 μ g / 1 mg
C01017-GMP	Croyez GMP® IL-15	100 μ g / 1 mg	C01177-GMP	Croyez GMP® SCF	100 μ g / 1 mg
C01023-GMP	Croyez GMP® IL-18	100 μ g / 1 mg	C01121-GMP	Croyez GMP® EGF	100 μ g / 1 mg
C01026-GMP	Croyez GMP® IL-21	100 μ g / 1 mg	C01176-GMP	Croyez GMP® Noggin, Human	100 μ g / 1 mg
C01116-GMP	Croyez GMP® GM-CSF	100 μ g / 1 mg	C01084-GMP	Croyez GMP® 4-1BBL, Human	100 μ g / 1 mg
			C01180-GMP	Croyez GMP® Human IL-2 & IL-15 Fusion Protein, Tag Free	100 μ g / 1 mg

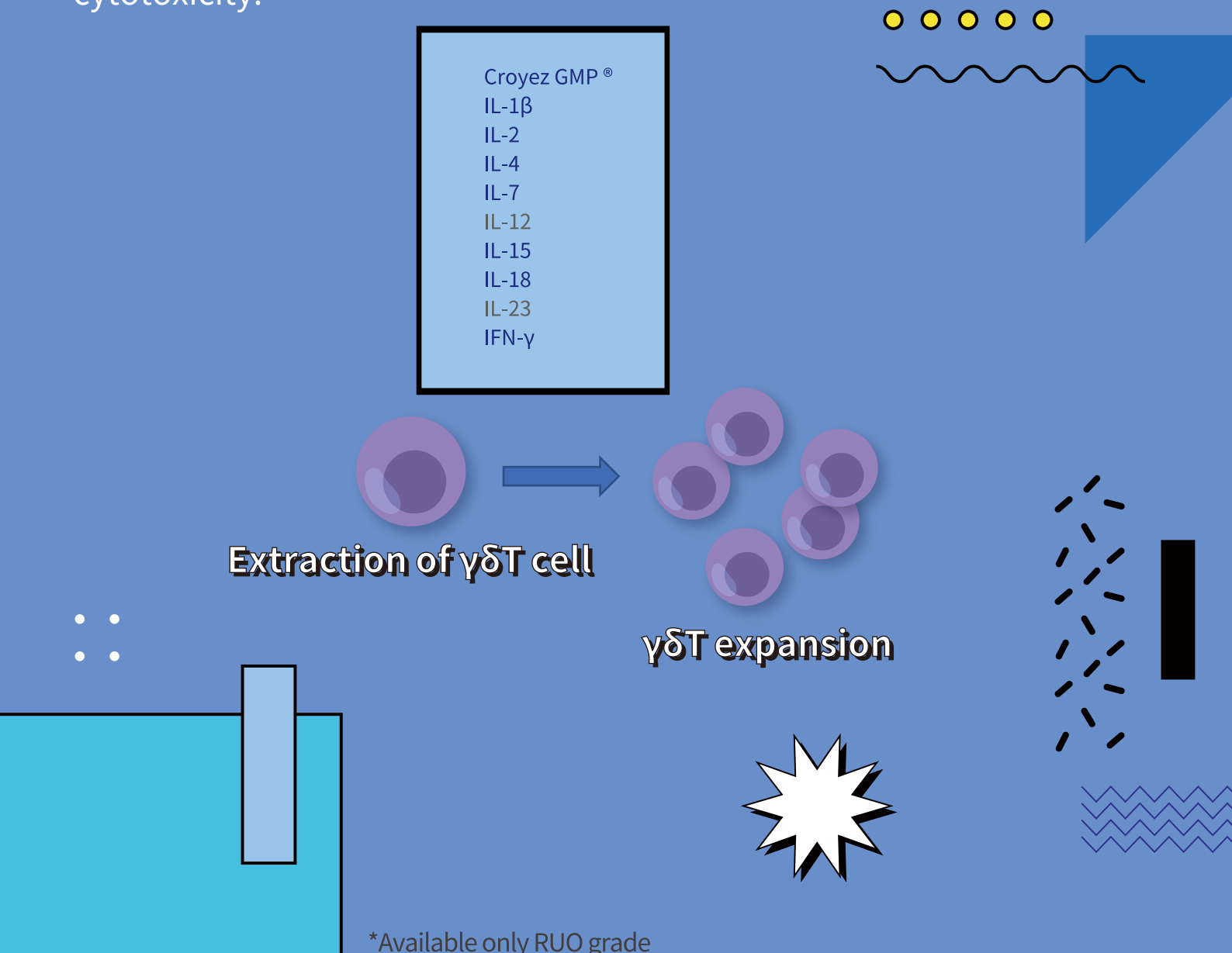
Recombinant proteins listed above are Human species

T cells

In cell-mediated immunity, T cells are crucial. T-cell immunotherapy for cancer, chronic infection, and autoimmune is a fast developing field with encouraging clinical trial findings.

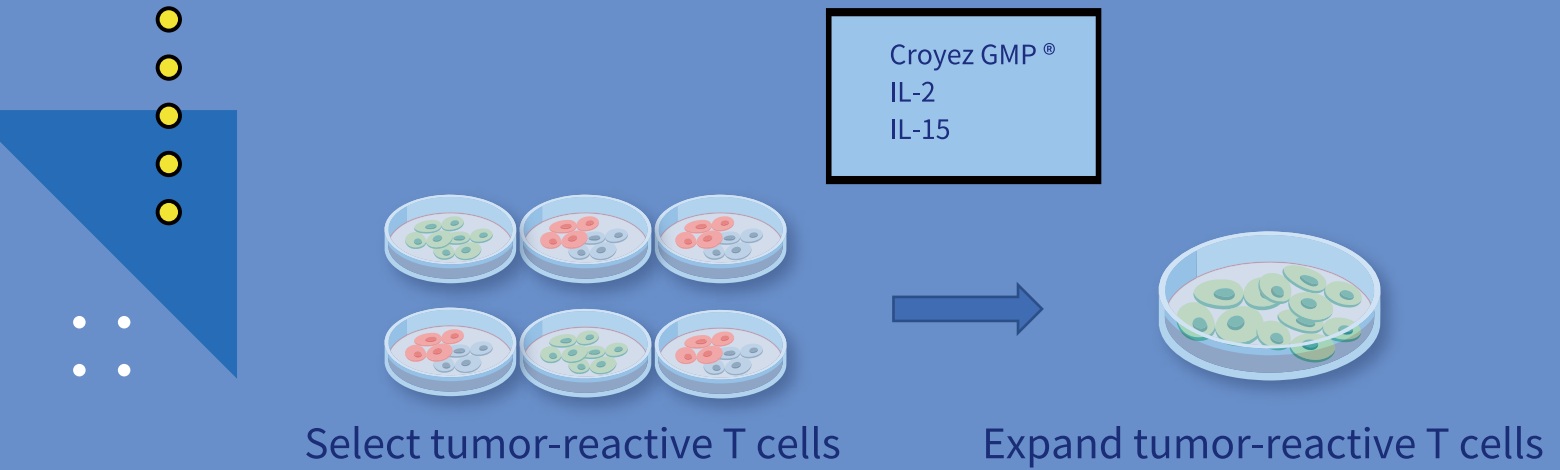
$\gamma\delta$ T cell

$\gamma\delta$ T cells of the lineage are unusual T cells that perform tasks other than MHC-mediated antigen presentation. $\gamma\delta$ T-cells have been emphasized in tumor immunology because of their broad antigen specificity and NK-like cytotoxicity.



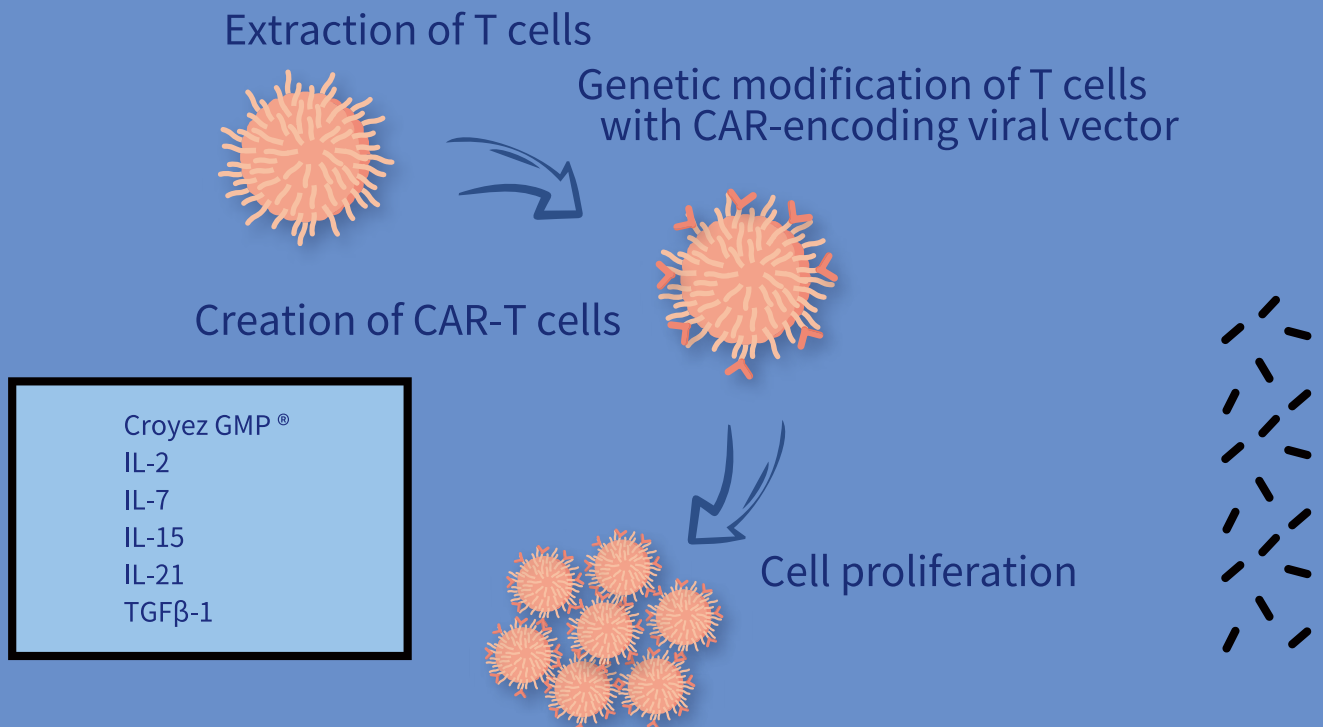
TIC (Tumor Infiltrating Cell)

TILs obtain from a patient's tumor can recognize a variety of targets. This provides a significant therapeutic benefit because it stops the tumor from eluding our efforts by hiding one target at a time.



CAR-T (Chimeric Antigen Receptor T cell)

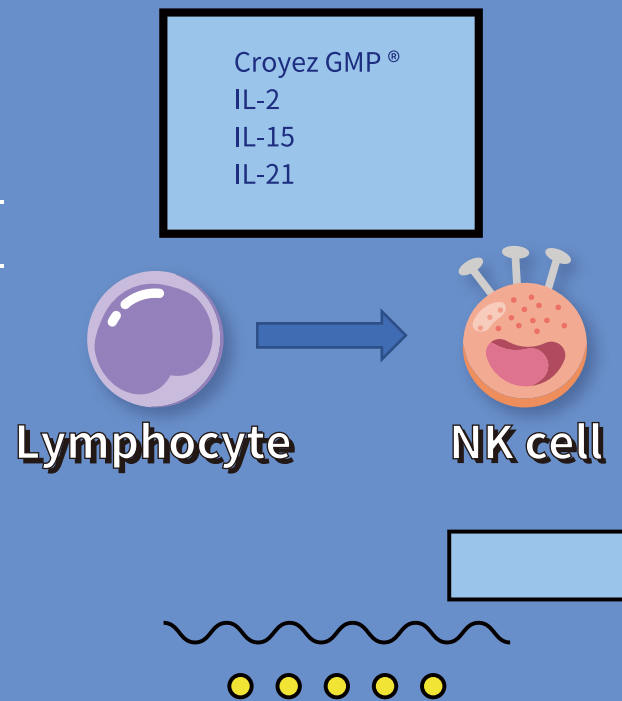
CAR T-cell treatment genetically alters a patient's autologous T-cells to express a CAR specific for a tumor antigen, followed by ex vivo cell multiplication and re-infusion back into the patient.



NK cell (Natural Killer cell)

NK cells are a type of cytotoxic lymphocyte found in the innate immune system. They play an important role in tumor and virally infected cell host rejection.

NK cell infusion immunotherapy is a promising adjuvant treatment for various malignancies.

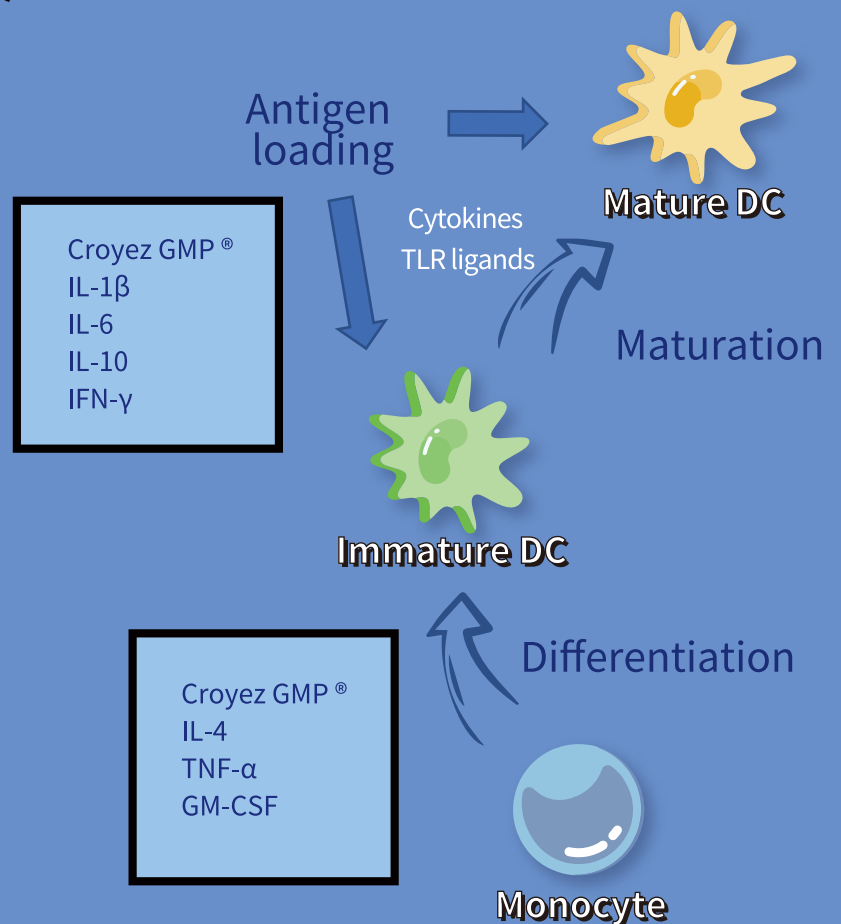


DC (Dendritic cell)

DCs are antigen-producing cells that can make T cells more sensitive to antigens.

They are important regulators of both innate and adaptive immunity.

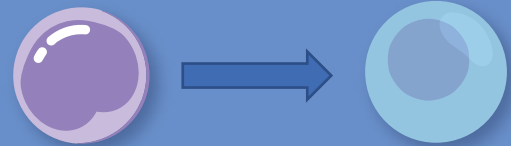
DC therapy is a novel and promising immunotherapeutic technique for the treatment of cancers of various sorts.



CIK (Cytokine Induced Killer cells)

Ex-Vitro grown polyclonal T-effector cells with both natural killer (NK) and T-cell capabilities, CIK cells exhibit robust non-MHC-restricted cytotoxicity against a variety of tumor target cells.

- Croyez GMP®
- IL-1
- IL-2
- IL-12
- IL-15
- TNF- α
- IFN- γ

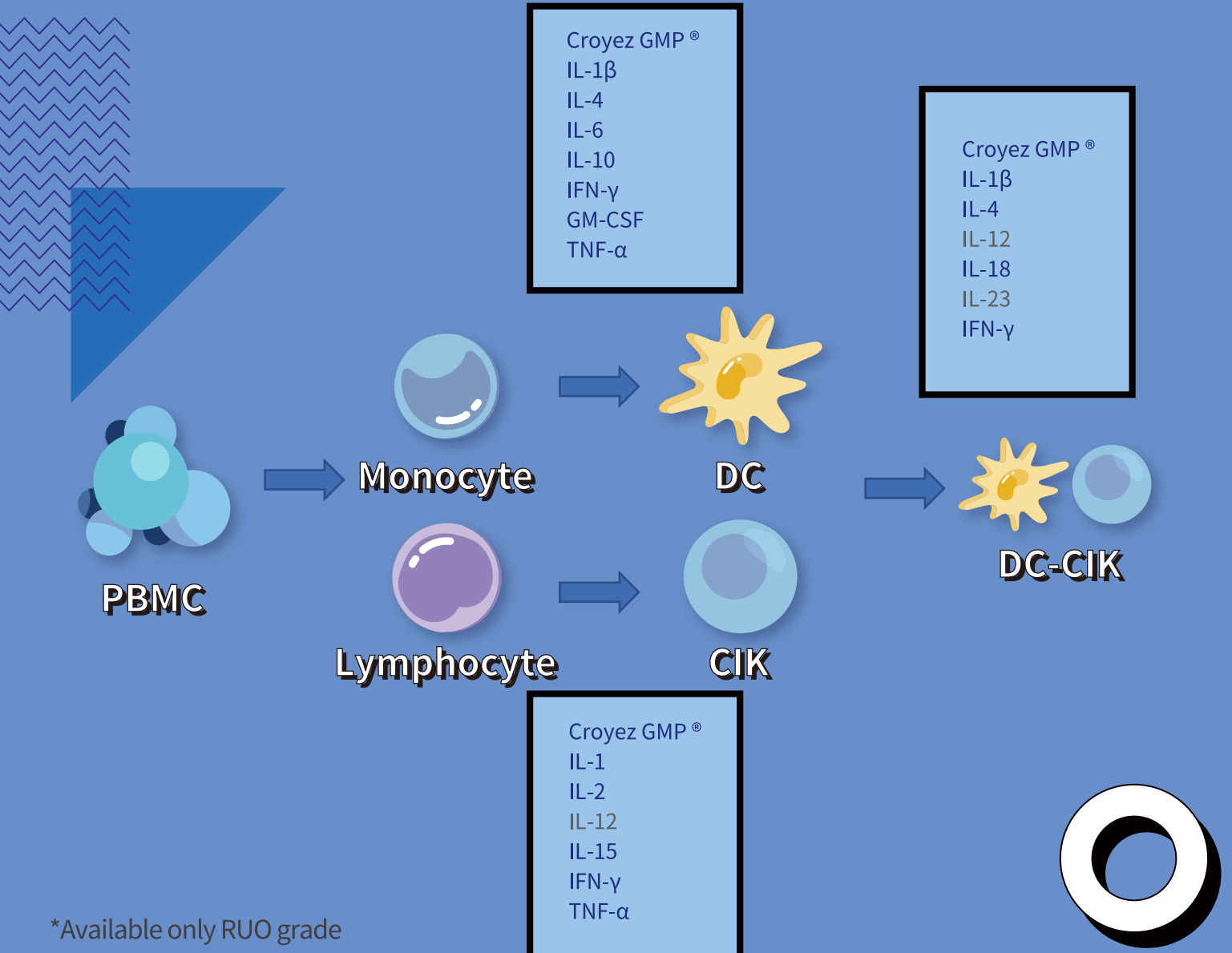


Lymphocyte

CIK

DC-CIK

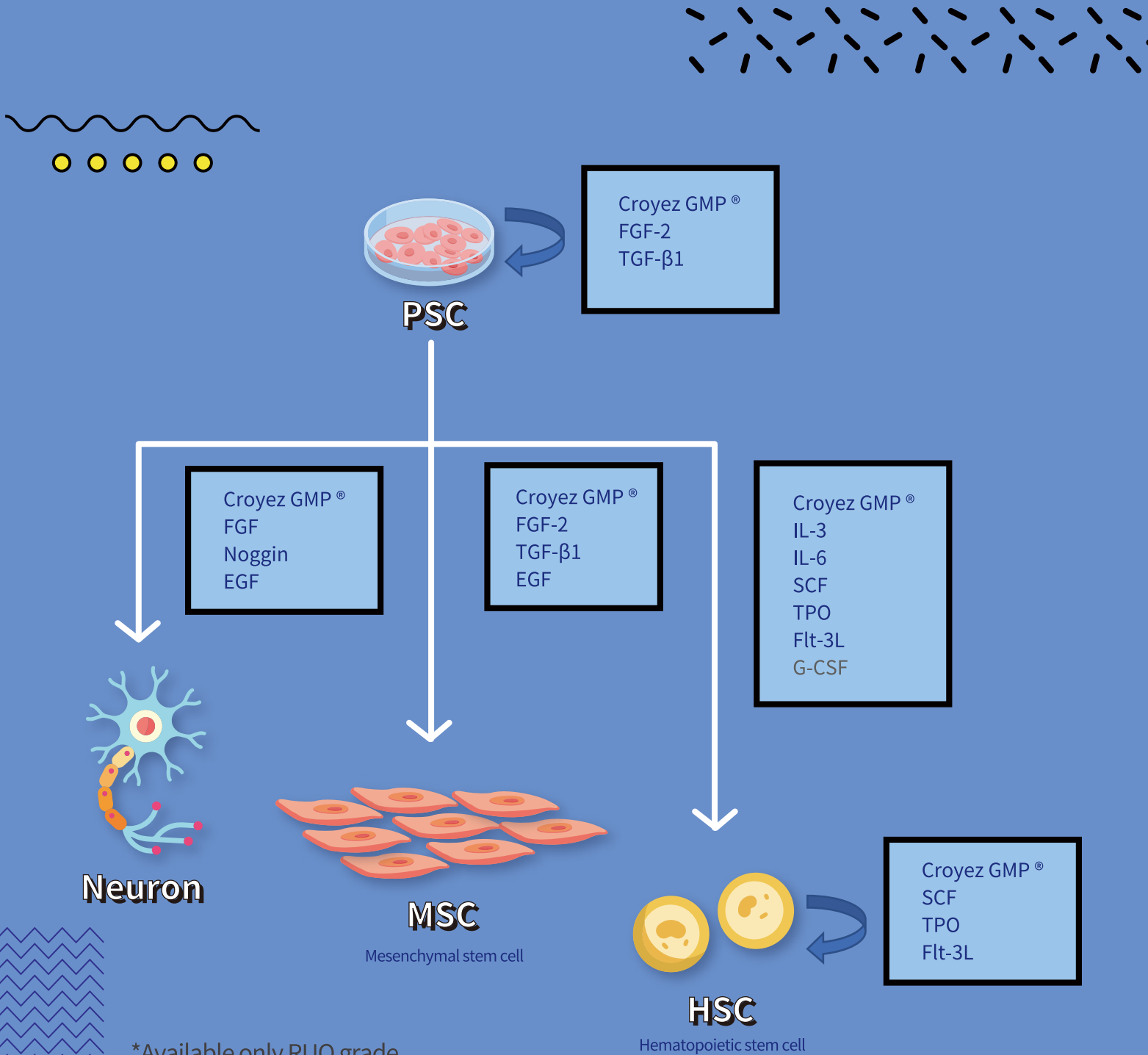
The combination of in vitro generated dendritic cells (DC) and cytokine-induced killer cells (CIK) is highly efficient to produce from individual patients and has shown safety and efficacy alone or with chemotherapy.



*Available only RUO grade

PSC (Pluripotent stem cell)

PSC has the ability to develop into all types of human cells and can self-renew. Basic research, pharmacological testing, and regenerative medicine are all potential therapeutic applications.



*Available only RUO grade