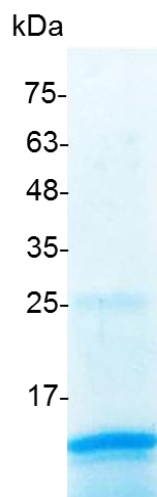


PRODUCT INFORMATION

TGF beta 2 (Transforming growth factor beta 2), Human

Catalog number	C01089-5UG / C01089-20UG / C01089-100UG
Package	5 µg / 20 µg / 100 µg
Description	TGF-β2 is a secreted protein known as a cytokine that performs many cellular functions and has a vital role during embryonic development. TGF-β2 signaling begins with binding to a complex of the accessory receptor betaglycan and a type II ser/thr kinase receptor termed TGF-beta RII. This receptor then phosphorylates and activates another ser/thr kinase receptor, TGF-beta RI, or alternatively, ALK-1. The whole complex phosphorylates and activates Smad proteins that regulate transcription (3, 11, 12). Use of other signaling pathways that are Smad-independent allows for disparate actions observed in response to TGF-beta in different contexts.
Source	<i>Escherichia coli</i>
Sequence	MALDAAYCFRNVQDNCCLRPLYIDFKRDLGWKWIHEPKGYNANFCAGACPYL WSSDTQHSRVLSTLYNTINPEASASPCCVSQDLEPLTILYYIGKTPKIEQLSNMIVK SCKCS with polyhistidine tag at the C-terminus
Endotoxin level	<0.01 EU per 1 µg of the protein by the LAL method.
Activity	Measure by its ability to inhibit IL-4-induce proliferation in HT-2 cells. The ED ₅₀ for this effect is <0.2 ng/mL. The specific activity of recombinant human TGF beta 2 is > 5 x 10 ⁶ IU/mg.
Purity	>98% as determined by SDS-PAGE. Ni-NTA chromatography
Formulation	The protein was lyophilized from a solution containing 20 mM sodium citrate, 0.2 M NaCl, pH 3.5.
Reconstitution	It is recommended to reconstitute the lyophilized protein in sterile H ₂ O to a concentration not less than 100 µg/mL and incubate the stock solution for at least 20 min to ensure sufficient re-dissolved. In some experiments, it recommends to add 10 mM HCl when reconstitute lyophilized protein.
Storage	Lyophilized protein should be stored at -20°C. Upon reconstitution, protein aliquots should be stored at -20°C or -80°C.
Note	Please use within two weeks after protein reconstitution.



SDS-PAGE analysis of recombinant human TGF beta 2

For Research Use Only.