

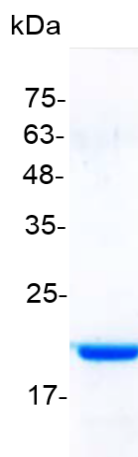
PRODUCT INFORMATION
Croyez GMP® SCF, Human

Catalog number	C01177-GMP-100 / C01177-GMP-1000
Package	100 µg / 1 mg
Description	Stem Cell Factor (SCF) is a stromal cell-derived cytokine synthesized by fibroblasts and other cell types. SCF promotes proliferation and early differentiation of cells at the level of multipotential stem cells. SCF is a growth factor important for proliferation, and differentiation of hematopoietic stem cells. One of its roles is to change the BFU-E (burst-forming unit-erythroid) cells, which are the earliest erythrocyte precursors in the erythrocytic series, into the CFU-E (colony-forming unit-erythroid).
Source	<i>Escherichia coli</i> Animal-free reagent and laboratory Manufactured and tested under GMP guideline
Sequence	MEGICRNRVTNNVKDVTKLVANLPKDYMITLKYVPGMDVLP SHCWISEM VVQLS DSLTDLLDKFSNISEGLSNYSIIDKLVNIVDDLVECVKENSSKDLKKSFKSPEPRL FTPEEFFRIFNRSIDAFKDFVVASETSDCVVSSTLSPEKDSRVSVTKPFMLPPVA with polyhistidine tag at the C-terminus
Endotoxin level	<0.1 EU per 1 µg of the protein by the LAL method.
Activity	Measure by its ability to induce TF-1 cells proliferation. The ED ₅₀ for this effect is <5 ng/mL. The specific activity of recombinant human SCF is > 5 x 10 ⁵ IU/mg.
Purity	>98% as determined by SDS-PAGE. Purified by Ni-NTA chromatography.
Formulation	The protein was lyophilized from a solution containing 1X PBS, pH 7.4.
Reconstitution	It is recommended to reconstitute the lyophilized protein in sterile H ₂ O to a concentration not less than 100 µg/mL and incubate the stock solution for at least 20 min to ensure sufficient re-dissolved.
Storage	Lyophilized protein should be stored at -20°C. This product is stable for one year upon receipt, when handled and stored as instructed. Upon reconstitution, protein aliquots should be stored at -20°C or -80°C. Avoid repeated freeze/thaw cycles.
Note	Please use within one month after protein reconstitution.
Specification	Croyez GMP® recombinant proteins are manufactured in ISO 13485:2016 and GMP-certified facility. The processes include:

-
- Testing and traceability of raw material
 - Records of the maintenance and equipment calibration
 - Personnel training records
 - Batch-to-batch consistency
 - Documentation of QA control and process changes
 - Manufactured and tested under an ISO 13485:2016 certified quality management system
 - Stability monitor of product shelf-life
-

Reference

1. Lennartsson J, Rönstrand L. (2012) *Physiol Rev.* 92,4: 1619-49.
 2. Smith, M A et al. (2001) *Acta Haematol.* 105,3: 143-50.
 3. McNiece IK, Briddell RA. (1995) *J Leukoc Biol.* 58,1: 14-22.
 4. Ashman, LK. (1999) *Int J Biochem Cell Biol.* 31,10: 1037-51.
-



SDS-PAGE analysis of Croyez GMP[®] SCF, Human

For Research Use Only. Not for use in diagnostic or therapeutic procedures.