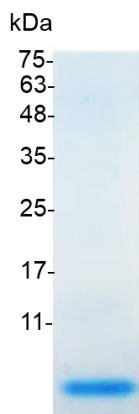


PRODUCT INFORMATION
CCL3 (C-C motif chemokine ligand 3), Human

Catalog number	C01140-5UG / C01140-20UG / C01140-100UG
Package	5 µg / 20 µg / 100 µg
Description	CCL3 is belonging to the CC chemokine family. CCL3 participates in activating and recruiting cells, such as lymphocytes, monocytes, and granulocytes during acute inflammation. In addition, CCL3 can enhance IFN-γ secretion from activated T cells and thus induces Th1 response, thereby to regulating leukocyte migration. It is reported that CCL3 is involved in susceptibility of HIV infection and disease progression of AIDS.
Source	<i>Escherichia coli</i>
Sequence	ADTPTACCFSYTSRQIPQNFADYFETSSQCCKPGVIFLTKRSRQVCADPSEEW VQKYVSDLELSA
Endotoxin level	<0.1 EU per 1 µg of the protein by the LAL method.
Activity	Measure by its ability to chemoattract BaF3 cells transfected with human CCR5. The ED ₅₀ for this effect is <10 ng/mL.
Purity	>98% as determined by SDS-PAGE. Ni-NTA chromatography
Formulation	The protein was lyophilized from a solution containing 50 mM Tris and 150 mM NaCl, pH 8.5.
Reconstitution	It is recommended to reconstitute the lyophilized protein in sterile H ₂ O to a concentration not less than 100 µg/mL and incubate the stock solution for at least 20 min to ensure sufficient re-dissolved.
Storage	Lyophilized protein should be stored at -20°C. Upon reconstitution, protein aliquots should be stored at -20°C or -80°C.
Note	Please use within one month after protein reconstitution.



SDS-PAGE analysis of recombinant human CCL3

For Research Use Only.