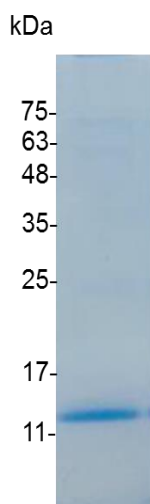


PRODUCT INFORMATION

CCL2 (C-C Motif Chemokine Ligand 2), Swine

Catalog number	C03026-5UG / C03026-20UG / C03026-100UG
Package	5 µg / 20 µg / 100 µg
Description	CCL2, also known as MCP-1, is belonging to the CC β chemokine family. CCL2 can be identified in endothelial cells, smooth muscle cells and monocytes as the results of reaction to several atherogenic stimulants, such as CD40 ligand, (IL-1β) and oxidized low density lipoprotein , interleukin-1βplatelet derived growth factor (PDGF). Recent study shows that in vivo MCP1 have several critical roles in atherosclerosis. Additionally, MCP-1 has been proved involving in monocytic infiltration of tissues during several inflammatory diseases, and has been implicated in macrophage-mediated tumor growth inhibition in mice. In addition, CCL2 has been shown to have direct effects on tumor cells in an autocrine and paracrine fashion in multiple cancers, including sarcoma, lung, cervix, ovary, breast, and prostate.
Source	<i>Escherichia coli</i>
Sequence	QPDAINSPVTCCYTLTSKKISMQRRLMSYRRVTSSKCPKEAVIFKTIAGKEICAEPK QKVVQDSISHLDKKNQTPKP with polyhistidine tag at the N-terminus
Endotoxin level	<0.1 EU per 1 µg of the protein by the LAL method.
Purity	>98% as determined by SDS-PAGE. Ni-NTA chromatography
Formulation	The protein was lyophilized from a solution containing 1X PBS, pH 7.4.
Reconstitution	It is recommended to reconstitute the lyophilized protein in sterile H ₂ O to a concentration not less than 100 µg/mL and incubate the stock solution for at least 20 min to ensure sufficient re-dissolved.
Storage	Lyophilized protein should be stored at -20°C. Upon reconstitution, protein aliquots should be stored at -20°C or -80°C.
Note	Please use within one month after protein reconstitution.



SDS-PAGE analysis of recombinant swine CCL2

For Research Use Only.