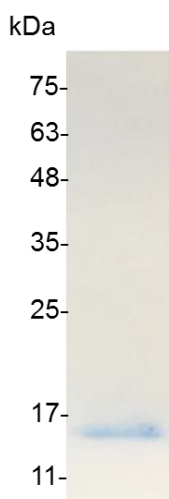


PRODUCT INFORMATION

CXCL10 (C-X-C motif chemokine 10), Swine

| | |
|------------------------|---|
| Catalog number | C03023-5UG / C03023-20UG / C03023-100UG |
| Package | 5 µg / 20 µg / 100 µg |
| Description | CXCL10 ,belongs to the CXC chemokine family, is also known as IP-10. CXCL10 was originally identified as a responder to IFN-gamma in monocytes, endothelial cells and fibroblasts. The effects of this chemokine can be induced by binding to the cell surface chemokine receptor CXCR3. Research shows that CXCL10 is a chemoattractant for activated T-lymphocytes, monocytes and macrophages. It also has other functions, such as promotion of T cell adhesion to endothelial cell. |
| Source | <i>Escherichia coli</i> |
| Sequence | PLSRTVRCTCIKISDRPVNPRSLEKLEMIPASQSCPHVEIIATMKKNGEKRCLNP ESKTIKNLLKAISKERSKRSPRTQREA with polyhistidine tag at the N-terminus |
| Endotoxin level | <0.1 EU per 1 µg of the protein by the LAL method. |
| Activity | Measure by its ability to chemoattract BaF3 cells transfected with human CXCR2. The ED ₅₀ for this effect is <4 ng/mL. |
| Purity | >98% as determined by SDS-PAGE. Ni-NTA chromatography |
| Formulation | The protein was lyophilized from a solution containing 1X PBS, pH 7.4. |
| Reconstitution | It is recommended to reconstitute the lyophilized protein in sterile H ₂ O to a concentration not less than 100 µg/mL and incubate the stock solution for at least 20 min to ensure sufficient re-dissolved. |
| Storage | Lyophilized protein should be stored at -20°C. Upon reconstitution, protein aliquots should be stored at -20°C or -80°C. |
| Note | Please use within one month after protein reconstitution. |



SDS-PAGE analysis of recombinant swine CXCL10

For Research Use Only.