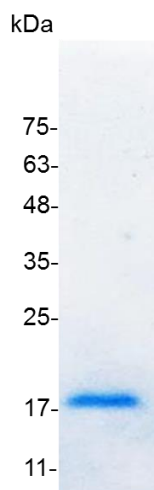


## PRODUCT INFORMATION

**CCL2 (C-C motif chemokine ligand 2), Mouse**

<b>Catalog number</b>	C02084-5UG / C02084-20UG / C02084-100UG
<b>Package</b>	5 µg / 20 µg / 100 µg
<b>Description</b>	CCL2, also known as MCP-1, is belonging to the CC β chemokine family. CCL2 can be identified in endothelial cells, smooth muscle cells and monocytes as the results of reaction to several atherogenic stimulants, such as CD40 ligand, (IL-1β) and oxidized low density lipoprotein, interleukin-1β platelet derived growth factor (PDGF). Recent study shows that in vivo MCP1 have several critical roles in atherosclerosis. Additionally, MCP-1 has been proved involving in monocytic infiltration of tissues during several inflammatory diseases, and has been implicated in macrophage-mediated tumor growth inhibition in mice. In addition, CCL2 has been shown to have direct effects on tumor cells in an autocrine and paracrine fashion in multiple cancers, including sarcoma, lung, cervix, ovary, breast, and prostate.
<b>Source</b>	<i>Escherichia coli</i>
<b>Sequence</b>	QPDAVNAPLTCCYSFTSKMIPMSRLESYKRITSSRCPKEAVVFVTKLKREVCAD PKKEWVQTYIKNLDRNQMRSEPTTLFKTASALRSSAPLNVKLTRKSEANASTTF STTTSSSTSVGVTSVTVN with polyhistidine tag at the N-terminus
<b>Endotoxin level</b>	<0.1 EU per 1 µg of the protein by the LAL method.
<b>Activity</b>	Measure by its ability to chemoattract BaF3 cells transfected with CCR2A. The ED <sub>50</sub> for this effect is <8 ng/mL.
<b>Purity</b>	>98% as determined by SDS-PAGE. Ni-NTA chromatography
<b>Formulation</b>	The protein was lyophilized from a solution containing 1X PBS, pH 7.4.
<b>Reconstitution</b>	It is recommended to reconstitute the lyophilized protein in sterile H <sub>2</sub> O to a concentration not less than 100 µg/mL and incubate the stock solution for at least 20 min to ensure sufficient re-dissolved.
<b>Storage</b>	Lyophilized protein should be stored at -20°C. Upon reconstitution, protein aliquots should be stored at -20°C or -80°C.
<b>Note</b>	Please use within one month after protein reconstitution.



SDS-PAGE analysis of recombinant mouse CCL2

For Research Use Only.