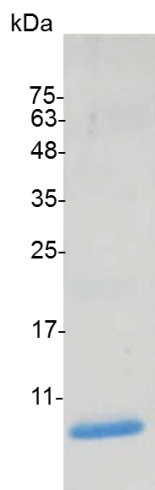


PRODUCT INFORMATION  
**CXCL2 (C-X-C motif chemokine 2), Mouse**

<b>Catalog number</b>	C02074-5UG / C02074-20UG / C02074-100UG
<b>Package</b>	5 µg / 20 µg / 100 µg
<b>Description</b>	CXCL2 is an ELR CXC chemokine. The structural and functional characteristics of CXCL2 have relationship with GRO1 (CXCL1), GRO3 (CXCL3), and interleukin-8 (CXCL8). It is produced by activated monocytes, neutrophils and macrophages. In addition, it also expresses at sites of inflammation. It has been detected that CXCL2 is highly expressed in serum of patients with the disease "esophageal squamous cell carcinoma" (ESCC).
<b>Source</b>	<i>Escherichia coli</i>
<b>Sequence</b>	AVVASELRCQCLKTLPRVDFKNIQSLSVTPPGPHCAQTEVIATLKGGQKVCLDPEAPLVQKIIQKILNKGKAN with polyhistidine tag at the N-terminus
<b>Endotoxin level</b>	<0.1 EU per 1 µg of the protein by the LAL method.
<b>Activity</b>	Measure by its ability to chemoattract BaF3 cells transfected with human CXCR2. The ED <sub>50</sub> for this effect is <0.5 ng/mL.
<b>Purity</b>	>98% as determined by SDS-PAGE. Ni-NTA chromatography
<b>Formulation</b>	The protein was lyophilized from a solution containing 1X PBS, pH 7.4.
<b>Reconstitution</b>	It is recommended to reconstitute the lyophilized protein in sterile H <sub>2</sub> O to a concentration not less than 100 µg/mL and incubate the stock solution for at least 20 min to ensure sufficient re-dissolved.
<b>Storage</b>	Lyophilized protein should be stored at -20°C. Upon reconstitution, protein aliquots should be stored at -20°C or -80°C.
<b>Note</b>	Please use within one month after protein reconstitution.



SDS-PAGE analysis of recombinant mouse CXCL2

For Research Use Only.