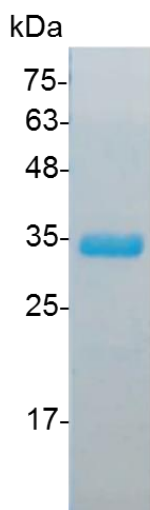


PRODUCT INFORMATION

Galectin-8, Human

Catalog number	C01161-5UG / C01161-20UG / C01161-100UG
Package	5 µg / 20 µg / 100 µg
Description	LGALS8, a member of the galectin gene family, is identified to specifically express in prostate, and is especially overexpressed in malignant tumors, thereby can be used as an extra specific identifier of malignancies. The gene encoded protein facilitates both cell-cell and cell matrix interactions in a method parallel to the selectin subgroup of C-type lectins.
Source	<i>Escherichia coli</i>
Sequence	MLSLNNLQNIINPVIPFVGTIPDQLDPGTLIVIRGHVPSDADRFQVDLQNGSSMK PRADVAHFHFNPRFKRAGCIVCNTLINEKWGREEITYDTPFKREKSFEIVIMVLKDK FQVAVNGKHTLLYGHRIGPEKIDTLGIYGKVNHSIGFSFSSDLQSTQASSLELTEI SRENVPKSGTPQLRPLPFAARLNTMPGPGRTVVVKGEVNANAKSFNVDLLAGKS KDIALHLNPRLNKAFVRNSFLQESWGEEERNITSFPFSPGMYFEMIIYCDVREFK VAVNGVHSLEYKHRFKELSSIDTLEINGDIHLLEVRWSW with polyhistidine tag at the N-terminus
Endotoxin level	<0.1 EU per 1 µg of the protein by the LAL method.
Activity	Measured by its ability to agglutinate human red blood cells. The ED ₅₀ for this effect is <8 µg/mL.
Purity	>98% as determined by SDS-PAGE. Ni-NTA chromatography
Formulation	The protein was lyophilized from a solution containing 1X PBS, pH 7.4.
Reconstitution	It is recommended to reconstitute the lyophilized protein in sterile H ₂ O to a concentration not less than 100 µg/mL and incubate the stock solution for at least 20 min to ensure sufficient re-dissolved.
Storage	Lyophilized protein should be stored at -20°C. Upon reconstitution, protein aliquots should be stored at -20°C or -80°C.
Note	Please use within one month after protein reconstitution.



SDS-PAGE analysis of recombinant human Galectin-8

For Research Use Only.