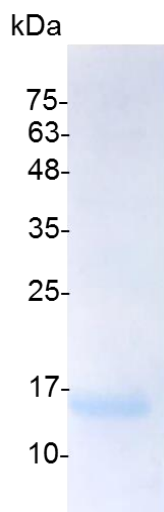


PRODUCT INFORMATION

Galectin-2, Human

Catalog number	C01157-5UG / C01157-20UG / C01157-100UG
Package	5 µg / 20 µg / 100 µg
Description	Galectin2, is a soluble beta-galactoside binding lectin. This protein induces apoptosis in activated T cells and binds to the cytokine lymphotoxin-alpha (LTA) with possible implications in risk of myocardial infarction. Galectin-2 also modulates cell-to-cell adhesion and cell-to-extracellular matrix interactions and play a role in tumor progression, pre-mRNA splicing and apoptosis.
Source	<i>Escherichia coli</i>
Sequence	TGELEVKNMDMKPGSTLKITGSIADGTDGFVINLGQGTDKLNLFNPRFSESTIV CNSLDGSNWGQEQRREDHLCFSPGSEVKFTVTFESDKFKVKLPDGHELTSFPNRL GSHLSYLSVRGGFNMSSFKLKE with polyhistidine tag at the N-terminus
Endotoxin level	<0.1 EU per 1 µg of the protein by the LAL method.
Activity	Measured by its ability to agglutinate human red blood cells. The ED ₅₀ for this effect is <20 µg/mL.
Purity	>98% as determined by SDS-PAGE. Ni-NTA chromatography
Formulation	The protein was lyophilized from a solution containing 1X PBS, pH 7.4.
Reconstitution	It is recommended to reconstitute the lyophilized protein in sterile H ₂ O to a concentration not less than 100 µg/mL and incubate the stock solution for at least 20 min to ensure sufficient re-dissolved.
Storage	Lyophilized protein should be stored at -20°C. Upon reconstitution, protein aliquots should be stored at -20°C or -80°C.
Note	Please use within one month after protein reconstitution.



SDS-PAGE analysis of recombinant human Galectin-2

For Research Use Only.