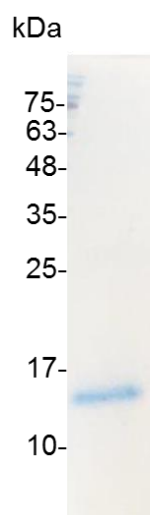


PRODUCT INFORMATION

CXCL10 (C-X-C motif chemokine 10), Human

Catalog number	C01135-5UG / C01135-20UG / C01135-100UG
Package	5 µg / 20 µg / 100 µg
Description	CXCL10 ,belongs to the CXC chemokine family, is also known as IP-10. CXCL10 was originally identified as a responder to IFN-gamma in monocytes, endothelial cells and fibroblasts. The effects of this chemokine can be induced by binding to the cell surface chemokine receptor CXCR3. Research shows that CXCL10 is a chemoattractant for activated T-lymphocytes, monocytes and macrophages. It also has other functions, such as promotion of T cell adhesion to endothelial cell.
Source	<i>Escherichia coli</i>
Sequence	VPLSRTVRCTCISISNQPVNPRSLEKLEIIPASQFCPRVEIATMKKKGEKRCLNP ESKAIKNLLKAVSKERSKRSP with polyhistidine tag at the N-terminus
Endotoxin level	<0.1 EU per 1 µg of the protein by the LAL method.
Activity	Measure by its ability to chemoattract BaF3 cells transfected with human CXCR3. The ED ₅₀ for this effect is <0.15 µg/mL.
Purity	>98% as determined by SDS-PAGE. Ni-NTA chromatography
Formulation	The protein was lyophilized from a solution containing 1X PBS, pH 7.4.
Reconstitution	It is recommended to reconstitute the lyophilized protein in sterile H ₂ O to a concentration not less than 100 µg/mL and incubate the stock solution for at least 20 min to ensure sufficient re-dissolved.
Storage	Lyophilized protein should be stored at -20°C. Upon reconstitution, protein aliquots should be stored at -20°C or -80°C.
Note	Please use within one month after protein reconstitution.



SDS-PAGE analysis of recombinant human CXCL10

For Research Use Only.