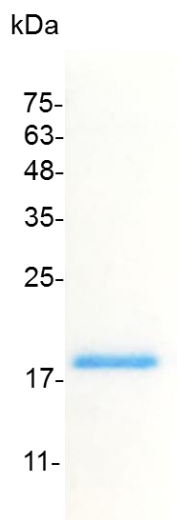


PRODUCT INFORMATION

CXCL9 (C-X-C motif chemokine 9), Human

| | |
|------------------------|---|
| Catalog number | C01134-5UG / C01134-20UG / C01134-100UG |
| Package | 5 µg / 20 µg / 100 µg |
| Description | CXCL9, also named Monokine, is a member of the CXC chemokine family and is induced by gamma interferon (MIG). Following induced by IFN-gamma, this chemokine can attract T-cells. CXCL9 has close relationship with two other CXC chemokines named CXCL10 and CXCL11, additionally they all elicit their chemotactic functions by interacting with the chemokine receptor CXCR3. CXCL9 is also a cytokine that affects the growth, movement, or activation state of cells participating in immune and inflammatory response and work as a chemoattractant of activated T-cells. |
| Source | <i>Escherichia coli</i> |
| Sequence | TPVVRKGRCSICSTNQGTIHLQSLKDLKQFAPSPSCEKIEIIATLKNGVQTCLNPD SADVKELIKKWEKQVSQKKKQKNGKKHQKKKVLKVRKSQRSRQKKTT with polyhistidine tag at the N-terminus |
| Endotoxin level | <0.1 EU per 1 µg of the protein by the LAL method. |
| Activity | Measure by its ability to chemoattract BaF3 cells transfected with mouse CXCR3. The ED ₅₀ for this effect is <0.5 µg/mL. |
| Purity | >98% as determined by SDS-PAGE. Ni-NTA chromatography |
| Formulation | The protein was lyophilized from a solution containing 1X PBS, pH 7.4. |
| Reconstitution | It is recommended to reconstitute the lyophilized protein in sterile H ₂ O to a concentration not less than 100 µg/mL and incubate the stock solution for at least 20 min to ensure sufficient re-dissolved. |
| Storage | Lyophilized protein should be stored at -20°C. Upon reconstitution, protein aliquots should be stored at -20°C or -80°C. |
| Note | Please use within one month after protein reconstitution. |



SDS-PAGE analysis of recombinant human CXCL9

For Research Use Only.