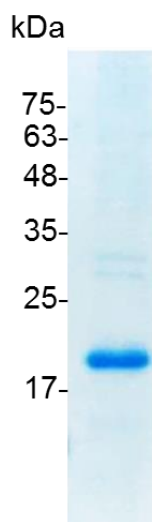


PRODUCT INFORMATION  
**CD30L (CD30 ligand), Human**

<b>Catalog number</b>	C01053-5UG / C01053-20UG / C01053-100UG
<b>Package</b>	5 µg / 20 µg / 100 µg
<b>Description</b>	CD30L is a member of the TNF superfamily, and is a type-II membrane-associated glycoprotein. It is primarily expressed on certain B cells, T cells, and monocytes. In lymphomas and various chronically inflamed tissues, CD30L can specifically bind to CD30 (receptor), which is expressed on activated, but not resting, B and T cells. CD30L can interact with CD30 to start a signaling cascade that can finally lead to the activation of NF-κB. CD30L/CD30 signaling applies pleiotropic effects on normal cells, for example: cell death, differentiation, and cell division. CD30L/CD30 signaling can also affect some kinds of diseases, like Hodgkin's lymphoma, allergic inflammation, diabetes and mycobacterial infection.
<b>Source</b>	<i>Escherichia coli</i>
<b>Sequence</b>	MQRTDSIPNSPDNVPLKGGNCSEDLLCILKRAPFKKSWAYLQVAKHLNKTCLS WNKDGILHGVRYQDGNLVIQFPGLYFIICQLQLVQCPNNSVDLKLELLINKHIIKK QALVTVCESGMQTKHVYQNLSQLLDYLVNTTISVNVDTFQYIDTSTFPLENVL SIFLYNSD with polyhistidine tag at the C-terminus
<b>Endotoxin level</b>	<0.01 EU per 1 µg of the protein by the LAL method.
<b>Activity</b>	Measure by its ability to induce IL-8 secretion in human PBMCs. The ED <sub>50</sub> for this effect is <2 ng/mL.
<b>Purity</b>	>98% as determined by SDS-PAGE. Ni-NTA chromatography
<b>Formulation</b>	The protein was lyophilized from a solution containing 1X PBS, pH 7.4.
<b>Reconstitution</b>	It is recommended to reconstitute the lyophilized protein in sterile H <sub>2</sub> O to a concentration not less than 100 µg/mL and incubate the stock solution for at least 20 min to ensure sufficient re-dissolved.
<b>Storage</b>	Lyophilized protein should be stored at -20°C. Upon reconstitution, protein aliquots should be stored at -20°C or -80°C.
<b>Note</b>	Please use within one month after protein reconstitution.



SDS-PAGE analysis of recombinant human CD30L

For Research Use Only.