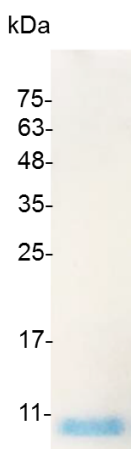


PRODUCT INFORMATION

IGF-I (Insulin-like growth factor-I), Swine

Catalog number	C03017-5UG / C03017-20UG / C03017-100UG
Package	5 µg / 20 µg / 100 µg
Description	Insulin-like growth factor 1 (IGF-1), also called somatomedin C, is a protein that in humans is encoded by the IGF1 gene. IGF-1 is a hormone similar in molecular structure to insulin. It plays an important role in childhood growth and continues to have anabolic effects in adults. A synthetic analog of IGF-1, mecasermin, is used for the treatment of growth failure.
Source	<i>Escherichia coli</i>
Sequence	MGPETLCGAELVDALQFVCGDRGFYFNKPTGYGSSSRRAPQTGIVDECCFRS CDLRRLEMYCAPLKPAKSA with polyhistidine tag at the C-terminus
Endotoxin level	<0.1 EU per 1 µg of the protein by the LAL method.
Purity	>98% as determined by SDS-PAGE. Ni-NTA chromatography
Formulation	The protein was lyophilized from a solution containing 1X PBS, pH 8.0.
Reconstitution	It is recommended to reconstitute the lyophilized protein in sterile H ₂ O to a concentration not less than 100 µg/mL and incubate the stock solution for at least 20 min to ensure sufficient re-dissolved.
Storage	Lyophilized protein should be stored at -20°C. Upon reconstitution, protein aliquots should be stored at -20°C or -80°C.
Note	Please use within one month after protein reconstitution.



SDS-PAGE analysis of recombinant swine IGF-I

For Research Use Only.