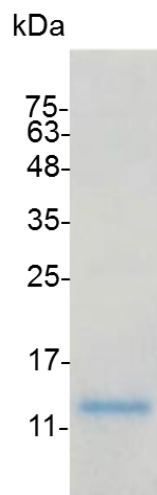


PRODUCT INFORMATION
IL-15 (Interleukin-15), Swine

Catalog number	C03008-5UG / C03008-20UG / C03008-100UG
Package	5 µg / 20 µg / 100 µg
Description	Interleukin-15 (IL-15) is a cytokine with structural similarity to Interleukin-2 (IL-2). Like IL-2, IL-15 binds to and signals through a complex composed of IL-2/IL-15 receptor beta chain (CD122) and the common gamma chain (gamma-C, CD132). IL-15 is secreted by mononuclear phagocytes (and some other cells) following infection by virus(es). This cytokine induces cell proliferation of natural killer cells; cells of the innate immune system whose principal role is to kill virally infected cells.
Source	<i>Escherichia coli</i>
Sequence	TWQHVISDLKKIEDLIRSIHMDATLYTESDAHPNCKVTAMKCFLELRVILQESRN SDISDTVENLILANSSLSSIEYKTESGCKECEEELEEKKNINEFLKSFIVQMFNPS with polyhistidine tag at the N-terminus
Endotoxin level	<0.01 EU per 1 µg of the protein by the LAL method.
Activity	Measure by its ability to induce proliferation in TF-1 cells. The ED ₅₀ for this effect is <5.5 ng/mL.
Purity	>95% as determined by SDS-PAGE. Ni-NTA chromatography
Formulation	The protein was lyophilized from a solution containing 1X PBS, pH 7.4.
Reconstitution	It is recommended to reconstitute the lyophilized protein in sterile H ₂ O to a concentration not less than 100 µg/mL and incubate the stock solution for at least 20 min to ensure sufficient re-dissolved.
Storage	Lyophilized protein should be stored at -20°C. Upon reconstitution, protein aliquots should be stored at -20°C or -80°C.
Note	Please use within one month after protein reconstitution.



SDS-PAGE analysis of recombinant swine IL-15

For Research Use Only.