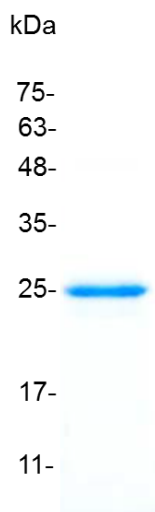


PRODUCT INFORMATION

IL-27 EBI3 (Interleukin-27 EBI3), Mouse

Catalog number	C02030-5UG / C02030-20UG / C02030-100UG
Package	5 µg / 20 µg / 100 µg
Description	IL-27 protein is a member of the IL-6 superfamily, which is expressed on monocytes, endothelial cells and dendritic cells. It is also referred to as the IL-12 p35-related protein. IL-27 protein is an early product of activated antigen-presenting cells and drives rapid clonal expansion of naive CD4(+) T cells and plays a role in the early regulation of Th1 cells initiation which drives efficient adaptive immune response. It has an antiproliferative activity on melanomas through WSX-1/STAT1 signaling. Thus, IL-27 protein may be an attractive candidate as an antitumor agent applicable to cancer immunotherapy.
Source	<i>Escherichia coli</i>
Sequence	MALVALSQPRVQCHASRYPVAVDCSWTPLQAPNSTRSTSFIATYRLGVATQQQ SQPCLQRSPQASRCTIPDVHLFSTVPYMLNVTAVHPGGASSLLAFVAERIIKPD PPEGVRLRTAGQRLQVLWHPASWPFDPDIFSLKYRLRYRRRGASHFRQVGPIE ATTFTLRNSKPHAKYCIQVSAQDLTDYGKPSDWSLPGQVESAPHKP with polyhistidine tag at the C-terminus
Endotoxin level	<0.1 EU per 1 µg of the protein by the LAL method.
Activity	Measure by its ability to protect HepG2 cells infected with encephalomyocarditis (EMC) virus. The ED ₅₀ for this effect is <5 ng/mL.
Purity	>95% as determined by SDS-PAGE. Ni-NTA chromatography
Formulation	The protein was lyophilized from a solution containing 20 mM sodium carbonate, 0.2M NaCl, pH 4.5.
Reconstitution	It is recommended to reconstitute the lyophilized protein in sterile H ₂ O to a concentration not less than 100 µg/mL and incubate the stock solution for at least 20 min to ensure sufficient re-dissolved.
Storage	Lyophilized protein should be stored at -20°C. Upon reconstitution, protein aliquots should be stored at -20°C or -80°C.
Note	Please use within one month after protein reconstitution.



SDS-PAGE analysis of recombinant mouse IL-27 EBI3

For Research Use Only.