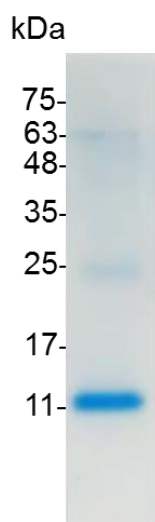


PRODUCT INFORMATION
IL-13 (Interleukin-13), Mouse

Catalog number	C02015-5UG / C02015-20UG / C02015-100UG
Package	5 µg / 20 µg / 100 µg
Description	Interleukin 13 (IL-13) is a protein that in humans is encoded by the IL13 gene. IL-13 was first cloned in 1993 and is located on chromosome 5q31 with a length of 1.4kb. It has a mass of 13 kDa and folds into 4 alpha helical bundles. The secondary structural features of IL-13 are similar to that of Interleukin 4 (IL-4); however it only has 25% sequence homology to IL-4 and is capable of IL-4 independent signaling. IL-13 is a cytokine secreted by T helper type 2 (Th2) cells, CD4 cells, Natural killer T cell, Mast cell, Basophil cells, Eosinophil cells and Nuocyte cells. Interleukin-13 is a central regulator in IgE synthesis, goblet cell hyperplasia, mucus hypersecretion, airway hyperresponsiveness, fibrosis and chitinase up-regulation. It is a mediator of allergic inflammation and different diseases including asthma.
Source	<i>Escherichia coli</i>
Sequence	MPVPRSVSLPLTLKELIEELSNITQDQTPLCNGSMVWSVDLAAGGFCVALDSL NISNCNAIYRTQRILHGLCNRKAPTTVSSLPDTKIEVAHFITKLLSYTKQLFRHG P F with polyhistidine tag at the C-terminus
Endotoxin level	<0.1 EU per 1 µg of the protein by the LAL method.
Activity	Measure by its ability to induce TF-1 cells proliferation. The ED ₅₀ for this effect is <4 ng/mL. The specific activity of recombinant mouse IL-13 is > 2.5 x 10 ⁵ IU/mg.
Purity	>95% as determined by SDS-PAGE. Ni-NTA chromatography
Formulation	The protein was lyophilized from a solution containing 1X PBS, pH 7.4.
Reconstitution	It is recommended to reconstitute the lyophilized protein in sterile H ₂ O to a concentration not less than 100 µg/mL and incubate the stock solution for at least 20 min to ensure sufficient re-dissolved.
Storage	Lyophilized protein should be stored at -20°C. Upon reconstitution, protein aliquots should be stored at -20°C or -80°C.
Note	Please use within two weeks after protein reconstitution.



SDS-PAGE analysis of recombinant mouse IL-13

For Research Use Only.