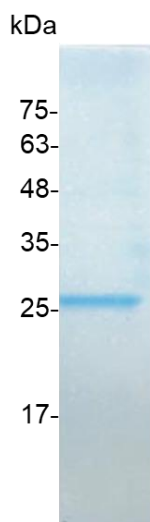


PRODUCT INFORMATION
GIF (Gastric intrinsic factor), Human

Catalog number	C01169-5UG / C01169-20UG / C01169-100UG
Package	5 µg / 20 µg / 100 µg
Description	Intrinsic factor (IF), also known as gastric intrinsic factor (GIF), is a glycoprotein produced by the parietal cells of the stomach. It is necessary for the absorption of vitamin B12 in the ileum of the small intestine. The gastric intrinsic factor protein is encoded by the GIF gene in humans.
Source	<i>Escherichia coli</i>
Sequence	MAWFALYLLSLLWATAGTSTQTQSSCSVPSAQEPLVNGIQVLMENSVTSSAYP NPSILIAMNLAGAYNLKAQKLLTYQLMSSDNNDLTIGQLGLTIMALTSSCRDPGD KVSILQRQMENWAPSSPNAEASAFYGPSLAILALCQKNSEATLPIAVRFAKTLA NSSPFNVDTGAMATLALTCMYNKIPVGSEEGYRSLFGQVLKDIVEKISMKIKDNG IIGDIYSTGLAMQALSVTPEPSKKEWNCKKTTDMILNEIKQGKFHNPMSIAQILPS LKGKTYLDVPQVTCSPDHEVQPTLPSNPGPGPTSASNITVIYTINNQLRGVELLF NETINVSVKSGSVLLVLEEAAQRKNPMFKFETTMTSWGLVSSINNIAENVNHKT YWQFLSGVTPLNEGVADYIPFNHEHITANFTQY with polyhistidine tag at the C-terminus
Endotoxin level	<0.1 EU per 1 µg of the protein by the LAL method.
Purity	>98% as determined by SDS-PAGE. Ni-NTA chromatography
Formulation	The protein was lyophilized from a solution containing 1X PBS, pH 8.0.
Reconstitution	It is recommended to reconstitute the lyophilized protein in sterile H ₂ O to a concentration not less than 100 µg/mL and incubate the stock solution for at least 20 min to ensure sufficient re-dissolved.
Storage	Lyophilized protein should be stored at -20°C. Upon reconstitution, protein aliquots should be stored at -20°C or -80°C.
Note	Please use within one month after protein reconstitution.



SDS-PAGE analysis of recombinant human GIF

For Research Use Only.