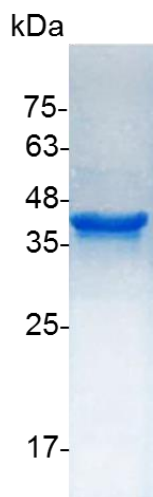


## PRODUCT INFORMATION

**CHI3L1 (Chitinase-3-like protein 1), Human**

<b>Catalog number</b>	C01146-5UG / C01146-20UG / C01146-100UG
<b>Package</b>	5 µg / 20 µg / 100 µg
<b>Description</b>	Chitinase-3-like protein 1 (CHI3L1), also known as YKL-40, is a secreted glycoprotein that is approximately 40kDa in size that in humans is encoded by the CHI3L1 gene. Elevated levels of CHI3L1 are associated with disorders exhibiting increased connective tissue turnover, such as rheumatoid, arthritis, osteoarthritis, scleroderma, and cirrhosis of liver, but is produced in cartilage from old donors or patients with osteoarthritis. CHI3L1 is abnormally expressed in the hippocampus of subjects with schizophrenia and may be involved in the cellular response to various environmental events that are reported to increase the risk of schizophrenia.
<b>Source</b>	<i>Escherichia coli</i>
<b>Sequence</b>	MYKLVCCYYTSWSQYREGDGSCFPDALDRFLCTHIIYSFANISNDHIDTWEWNDV TLYGMLNLTKNRNPNLKTLSSVGGWNFGSQRFASKIASNTQSRRTFIKSVPPFLR THGFDGLDLAWLYPGRRDKQHFTTLIKEMKAEFIKEAQPQKQLLLSAALSAGK VTIDSSYDIAKISQHLDFISIMTYDFHGAWRGTTGHHSPFRGQEDASPDRFSNT DYAVGYMLRLGAPASKLVMGIPTFGRSFTLASSETGVGAPISGPGIPGRFTKEA GTLAYYEICDFLRGATVHRILGQQVPYATKGNQWVGYYDDQESVKSQVQYLKDR QLAGAMVWALDLDLDFQGSFCGQDLRFPLTNAIKDALAAT with polyhistidine tag at the C-terminus
<b>Endotoxin level</b>	<0.1 EU per 1 µg of the protein by the LAL method.
<b>Purity</b>	>98% as determined by SDS-PAGE. Ni-NTA chromatography
<b>Formulation</b>	The protein was lyophilized from a solution containing 1X PBS, pH 7.4.
<b>Reconstitution</b>	It is recommended to reconstitute the lyophilized protein in sterile H <sub>2</sub> O to a concentration not less than 100 µg/mL and incubate the stock solution for at least 20 min to ensure sufficient re-dissolved.
<b>Storage</b>	Lyophilized protein should be stored at -20°C. Upon reconstitution, protein aliquots should be stored at -20°C or -80°C.
<b>Note</b>	Please use within one month after protein reconstitution.



SDS-PAGE analysis of recombinant human CHI3L1

For Research Use Only.