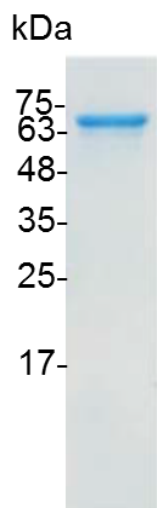


PRODUCT INFORMATION
MMP2 (active), Human

Catalog number	C01143-5UG / C01143-20UG / C01143-100UG
Package	5 µg / 20 µg / 100 µg
Description	Matrix metalloproteinases (MMPs) are a family of endoproteases that require zinc and calcium for expressing catalytic activity. MMP2 (Matrix Metalloproteinase 2) is a Protein-Coding gene. Diseases associated with MMP2 include Multicentric Osteolysis, Nodulosis, and Arthropathy.
Source	<i>Escherichia coli</i>
Sequence	MYNFFPRKPKWDKNQITYRIIGYTPDLDPETVDDAFARAFQVWSDVTPLRFSRI HDGEADIMINFRWEHGDGYFPDGGKDLLAHAFAPGTGVGGDSHFDDDELWT LGEGQVVRVKYGNADGEYCKFPFLFNGKEYNSCTDTGRSDGFLWCSTTYNFE KDGKYGFCPHEALFTMGGNAEGQPCKFPFRFQGTSYDSCTTEGRTDGYRWC GTTEYDRDKKYGFCEPETAMSTVGGNSEGAPCVFPFTFLGNKYESCTSAGRS DGKMWCAATTANYDDDRKWGFCPDQGYSLFLVAAHEFGHAMGLEHSQDPGAL MAPIYTYTKNFRLSQDDIKGIQELYGASPDIDLGTGPTPTLGPVTPEICKQDIVFD GIAQIRGEIFFFKDRFIWRTVTPRDKPMGPLLVATFWPELPEKIDAVYEAPQEEK AVFFAGNEYWIYSASTLERGYPKPLTSLGLPPDVQRVDAAFNWSKNKKTIFAG DKFWRYNEVKKKMDPGFPKLIADAWNAIPDNLDAVVDLQGGGHSYFFKGAYYL KLENQSLKSVKFGSIKSDWLGC with polyhistidine tag at the C-terminus
Endotoxin level	<0.1 EU per 1 µg of the protein by the LAL method.
Purity	>95% as determined by SDS-PAGE. Ni-NTA chromatography
Formulation	The protein was lyophilized from a solution containing 1X PBS, pH 8.0.
Reconstitution	It is recommended to reconstitute the lyophilized protein in sterile H ₂ O to a concentration not less than 100 µg/mL and incubate the stock solution for at least 20 min to ensure sufficient re-dissolved.
Storage	Lyophilized protein should be stored at -20°C. Upon reconstitution, protein aliquots should be stored at -20°C or -80°C.
Note	Please use within one month after protein reconstitution.



SDS-PAGE analysis of recombinant human MMP2 (active)

For Research Use Only.