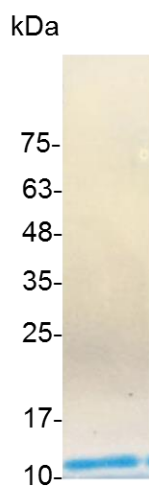


PRODUCT INFORMATION

CXCL12 (24-88) (C-X-C motif chemokine 12), Human

| | |
|------------------------|--|
| Catalog number | C01137-5UG / C01137-20UG / C01137-100UG |
| Package | 5 µg / 20 µg / 100 µg |
| Description | <p>The stromal cell-derived factor 1 (SDF1), also known as C-X-C motif chemokine 12 (CXCL12), is a chemokine protein that in humans is encoded by the CXCL12 gene on chromosome 10. It is ubiquitously expressed in many tissues and cell types. Stromal cell-derived factors 1-alpha and 1-beta are small cytokines that belong to the chemokine family, members of which activate leukocytes and are often induced by proinflammatory stimuli such as lipopolysaccharide, TNF, or IL1.</p> <p>The chemokines are characterized by the presence of 4 conserved cysteines that form 2 disulfide bonds. They can be classified into 2 subfamilies. In the CC subfamily, the cysteine residues are adjacent to each other. In the CXC subfamily, they are separated by an intervening amino acid. The SDF1 proteins belong to the latter group. CXCL12 signaling has been observed in several cancers. The CXCL12 gene also contains one of 27 SNPs associated with increased risk of coronary artery disease.</p> |
| Source | <i>Escherichia coli</i> |
| Sequence | MVLSYRCPGRFFESHVARANVKHLKILNTPNCALQIVARLKNNNRQVCIDPKLK WIQEYLEKALN with polyhistidine tag at the C-terminus |
| Endotoxin level | <0.1 EU per 1 µg of the protein by the LAL method. |
| Activity | Measure by its ability to chemoattract BaF3 cells transfected with human CXCR4. The ED ₅₀ for this effect is <0.5 ng/mL. |
| Purity | >98% as determined by SDS-PAGE. Ni-NTA chromatography |
| Formulation | The protein was lyophilized from a solution containing 20 mM sodium citrate, 0.1 M NaCl, pH 4.5. |
| Reconstitution | It is recommended to reconstitute the lyophilized protein in sterile H ₂ O to a concentration not less than 100 µg/mL and incubate the stock solution for at least 20 min to ensure sufficient re-dissolved. |
| Storage | Lyophilized protein should be stored at -20°C. Upon reconstitution, protein aliquots should be stored at -20°C or -80°C. |
| Note | Please use within one month after protein reconstitution. |



SDS-PAGE analysis of recombinant human CXCL12 (24-88)

For Research Use Only.