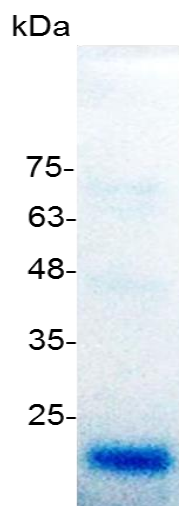


## PRODUCT INFORMATION

**VEGF165 (Vascular endothelial growth factor 165), Human**

<b>Catalog number</b>	C01125-5UG / C01125-20UG / C01125-100UG
<b>Package</b>	5 µg / 20 µg / 100 µg
<b>Description</b>	Vascular endothelial growth factor (VEGF), originally known as vascular permeability factor (VPF), is a signal protein produced by cells that stimulates the formation of blood vessels. VEGF is required during embryogenesis to regulate the proliferation, migration, and survival of endothelial cells. In adults, VEGF functions mainly in wound healing and the female reproductive cycle. Pathologically, it is involved in tumor angiogenesis and vascular leakage. Circulating VEGF levels correlate with disease activity in autoimmune diseases such as rheumatoid arthritis, multiple sclerosis and systemic lupus erythematosus. VEGF is induced by hypoxia and cytokines such as IL-1, IL-6, IL-8, oncostatin M and TNF-alpha.
<b>Source</b>	<i>Escherichia coli</i>
<b>Sequence</b>	MAPMAEGGGQNHHEVVKFMDVYQRSYCHPIETLVDIFQEY PDEIEYIFKPCSCP LMRCGGCCNDEGLECVPTTEESNITMQIMRIKPHQGQHIGEMSFLQHNKCECRP KKDRARQENPCGPCSERRKHLFVQDPQTCKCCKNTDSRCKARQLELNERTC RCDKPRR with polyhistidine tag at the C-terminus
<b>Endotoxin level</b>	<0.1 EU per 1 µg of the protein by the LAL method.
<b>Activity</b>	Measure by its ability to induce HUVEC cells proliferation. The ED <sub>50</sub> for this effect is <5 ng/mL. The specific activity of recombinant human VEGF165 is approximately >1.4 x 10 <sup>6</sup> IU/mg.
<b>Purity</b>	>98% as determined by SDS-PAGE. Ni-NTA chromatography
<b>Formulation</b>	The protein was lyophilized from a solution containing 1X PBS, pH 8.0.
<b>Reconstitution</b>	It is recommended to reconstitute the lyophilized protein in sterile H <sub>2</sub> O to a concentration not less than 100 µg/mL and incubate the stock solution for at least 20 min to ensure sufficient re-dissolved.
<b>Storage</b>	Lyophilized protein should be stored at -20°C. Upon reconstitution, protein aliquots should be stored at -20°C or -80°C.
<b>Note</b>	Please use within one month after protein reconstitution.



SDS-PAGE analysis of recombinant human VEGF165

For Research Use Only.