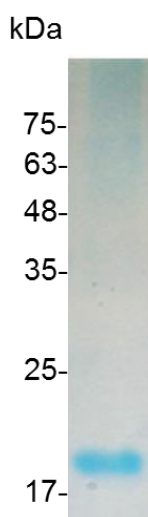


PRODUCT INFORMATION

M-CSF (Macrophage colony-stimulating factor), Mouse

Catalog number	C02065-5UG / C02065-20UG / C02065-100UG
Package	5 µg / 20 µg / 100 µg
Description	Macrophage Colony-Stimulating Factor (M-CSF), is a secreted cytokine which causes hematopoietic stem cells to differentiate into macrophages or other related cell types. The active form of M-CSF/CSF-1 is found extracellularly as a disulfide-linked homodimer, and is thought to be produced by proteolytic cleavage of membrane-bound precursors. M-CSF/CSF-1 induces cells of the monocyte/macrophage lineage. It also plays a role in immunological defenses, bone metabolism, lipoproteins clearance, fertility and pregnancy. Upregulation of M-CSF/CSF-1 in the infarcted myocardium may have an active role in healing not only through its effects on cells of monocyte/macrophage lineage, but also by regulating endothelial cell chemokine expression.
Source	<i>Escherichia coli</i>
Sequence	MKEVSEHCSHMIGNHGLKVLQQLIDSQMETSCQIAFEFVDQEQLDDPVCYLKKA FFLVQDIIDETMRFKDNTPNANATERLQELSNLNSCFTKDYEEQNKACVRTFH ETPLQLLEKIKNFFDETKNLLEKDWNIFTKNCNNSFAKCSSRDVVTKP with polyhistidine tag at the C-terminus
Endotoxin level	<0.1 EU per 1 µg of the protein by the LAL method.
Activity	Measure by its ability to induce proliferation in NFS-60 cells. The ED ₅₀ for this effect is <2 ng/mL. The specific activity of recombinant mouse M-CSF is approximately >5x 10 ⁵ IU/mg.
Purity	>98% as determined by SDS-PAGE. Ni-NTA chromatography
Formulation	The protein was lyophilized from a solution containing 1X PBS, pH 8.0.
Reconstitution	It is recommended to reconstitute the lyophilized protein in sterile H ₂ O to a concentration not less than 100 µg/mL and incubate the stock solution for at least 20 min to ensure sufficient re-dissolved.
Storage	Lyophilized protein should be stored at -20°C. Upon reconstitution, protein aliquots should be stored at -20°C or -80°C.
Note	Please use within two weeks after protein reconstitution.



SDS-PAGE analysis of recombinant mouse M-CSF

For Research Use Only.