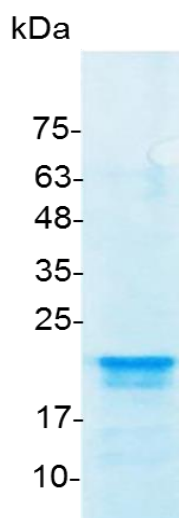


## PRODUCT INFORMATION

**FGF-18 (Fibroblast growth factor-18), Human**

<b>Catalog number</b>	C01108-5UG / C01108-20UG / C01108-100UG
<b>Package</b>	5 µg / 20 µg / 100 µg
<b>Description</b>	FGF-18 is a member of the fibroblast growth factor (FGF) family. FGF family members possess broad mitogenic and cell survival activities, and are involved in a variety of biological processes, including embryonic development, cell growth, morphogenesis, tissue repair, tumor growth and invasion. FGF-18 is required for normal skeletal development. It recruits osteoclasts and osteoblasts to the growth plate, promotes osteoclast formation and function, inhibits osteoblast differentiation, promotes skeletal vascularization, and induces chondrocyte hypertrophy and cartilage matrix formation.
<b>Source</b>	<i>Escherichia coli</i>
<b>Sequence</b>	MAEENVDFRIHVENQTRARDDVSRKQLRLYQLYSRTSGKHIQVLGRRISARGE DGDKYAQLLVETDTFGSQVRIKGGKETFYLCMNRKGKLVGKPDGTSKECVFIEK VLENNYTALMSAKYSGWYVGFTKKGRPRKGPKTRENNQDVFHMKRYPKGQP ELQKPFKYTTVTKRSR with polyhistidine tag at the C-terminus
<b>Endotoxin level</b>	<0.1 EU per 1 µg of the protein by the LAL method.
<b>Activity</b>	Measure by its ability to induce 3T3 cells proliferation. The ED <sub>50</sub> for this effect is 1.3-2.0 ng/mL. The specific activity of recombinant human FGF-18 is > 5 x 10 <sup>5</sup> IU/mg.
<b>Purity</b>	>98% as determined by SDS-PAGE. Ni-NTA chromatography
<b>Formulation</b>	The protein was lyophilized from a solution containing 1X PBS, pH 8.0.
<b>Reconstitution</b>	It is recommended to reconstitute the lyophilized protein in sterile H <sub>2</sub> O to a concentration not less than 100 µg/mL and incubate the stock solution for at least 20 min to ensure sufficient re-dissolved.
<b>Storage</b>	Lyophilized protein should be stored at -20°C. Upon reconstitution, protein aliquots should be stored at -20°C or -80°C.
<b>Note</b>	Please use within one month after protein reconstitution.



SDS-PAGE analysis of recombinant human FGF-18

For Research Use Only.