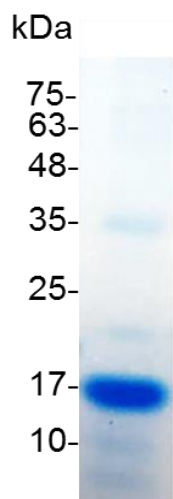


PRODUCT INFORMATION  
**IL-22 (Interleukin-22), Human**

<b>Catalog number</b>	C01027-5UG / C01027-20UG / C01027-100UG
<b>Package</b>	5 µg / 20 µg / 100 µg
<b>Description</b>	Interleukin-22 (IL-22) a member of a group of cytokines called the IL-10 family or IL-10 superfamily (including IL-19, IL-20, IL-24, and IL-26), a class of potent mediators of cellular inflammatory responses. It shares use of IL-10R2 in cell signaling with other members of this family, IL-10, IL-26, IL-28A/B and IL-29. IL-22 is produced by activated NK and T cells and initiates innate immune responses against bacterial pathogens especially in epithelial cells such as respiratory and gut epithelial cells. IL-22 along with IL-17 is rapidly produced by splenic LTI-like cells and also produced by Th17 cells and likely plays a role in the coordinated response of both adaptive innate immune systems, autoimmunity and tissue regeneration.
<b>Source</b>	<i>Escherichia coli</i>
<b>Sequence</b>	MAPISHCRLDKSNFQQPYITNRTFMLAKEASLADNNTDVRLIGEKLFHGVSMS ERCYLMKQVLNFTLEEVLPQSDRFQPYMQEVPFLARLSNRLSTCHIEGDDLH IQRNVQKLKDTVKKLGESGEIKAIGELDLLFMSLRNACI with polyhistidine tag at the C-terminus
<b>Endotoxin level</b>	<0.1 EU per 1 µg of the protein by the LAL method.
<b>Activity</b>	Measure by its ability to induce proliferation in A549 cells. The ED <sub>50</sub> for this effect is <0.5 ng/mL.
<b>Purity</b>	>98% as determined by SDS-PAGE. Ni-NTA chromatography
<b>Formulation</b>	The protein was lyophilized from a solution containing 1X PBS, pH 8.0.
<b>Reconstitution</b>	It is recommended to reconstitute the lyophilized protein in sterile H <sub>2</sub> O to a concentration not less than 100 µg/mL and incubate the stock solution for at least 20 min to ensure sufficient re-dissolved.
<b>Storage</b>	Lyophilized protein should be stored at -20°C. Upon reconstitution, protein aliquots should be stored at -20°C or -80°C.
<b>Note</b>	Please use within one month after protein reconstitution.



SDS-PAGE analysis of recombinant human IL-22

For Research Use Only.