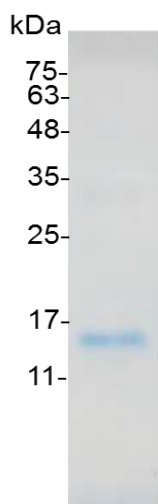


PRODUCT INFORMATION  
**IL-20 (Interleukin-20), Human**

<b>Catalog number</b>	C01025-5UG / C01025-20UG / C01025-100UG
<b>Package</b>	5 µg / 20 µg / 100 µg
<b>Description</b>	Interleukin 20 (IL20) is a cytokine structurally related to interleukin 10 (IL-10). This cytokine has been shown to transduce its signal through signal transducer and activator of transcription 3 (STAT3) in keratinocytes. A specific receptor for this cytokine is found to be expressed in skin and upregulated dramatically in psoriatic skin, suggesting a role for this protein in epidermal function and psoriasis.
<b>Source</b>	<i>Escherichia coli</i>
<b>Sequence</b>	MLKTLNLGSCVIATNLQEIRNGFSEIRGSVQAKDGNIDIRILRRTESLQDTKPANR CCLLRHLLRLYLDRVFKNYQTPDHYTLRKISSLANSFLTIKKDLRLCHAHMTCHC GEEAMKKYSQILSHFEKLEPQAAVVKALGELDILLQWMEETE with polyhistidine tag at the C-terminus
<b>Endotoxin level</b>	<0.1 EU per 1 µg of the protein by the LAL method.
<b>Activity</b>	Measure by its ability to chemoattract BaF3 cells transfected with human IL-20R alpha and IL-20R beta. The ED <sub>50</sub> for this effect is <0.2 ng/mL.
<b>Purity</b>	>98% as determined by SDS-PAGE. Ni-NTA chromatography
<b>Formulation</b>	The protein was lyophilized from a solution containing 1X PBS, pH 8.0.
<b>Reconstitution</b>	It is recommended to reconstitute the lyophilized protein in sterile H <sub>2</sub> O to a concentration not less than 100 µg/mL and incubate the stock solution for at least 20 min to ensure sufficient re-dissolved.
<b>Storage</b>	Lyophilized protein should be stored at -20°C. Upon reconstitution, protein aliquots should be stored at -20°C or -80°C.
<b>Note</b>	Please use within one month after protein reconstitution.



SDS-PAGE analysis of recombinant human IL-20

For Research Use Only.